

# EXTERNAL APPLICATION

## ROTARY PNEUMATIC VIBRATORS

### PRODUCT SERIES

BALL VIBRATORS  
S



### APPLICATIONS

Silos  
Hoppers  
Piping  
Chutes  
Compacting

### POWDERS

**Dry powders**  
Granules  
Plastics  
Sand  
Ashes  
Cement  
Lime

### FEATURES

Filter sleeve cleaning.  
Suitable for outdoor use.  
Resistant to oxidation.  
Atex II2G c Tx  
Atex II2D c Tx

### BENEFITS

Economical  
Low air consumption  
High frequency vibration

ROLLER VIBRATORS  
OR



Silos  
Hoppers  
Piping  
Chutes  
Concrete compaction

**Hygroscopic powders**  
Cement  
Concrete  
Sand  
Foundry sand

Compact and robust design.  
Suitable for outdoor use.  
Resistant to oxidations.  
Atex II2G c Tx  
Atex II2D c Tx

High centrifugal force  
Low air consumption  
High frequency vibration  
Suitable for high temperature

TURBINE VIBRATORS  
OT



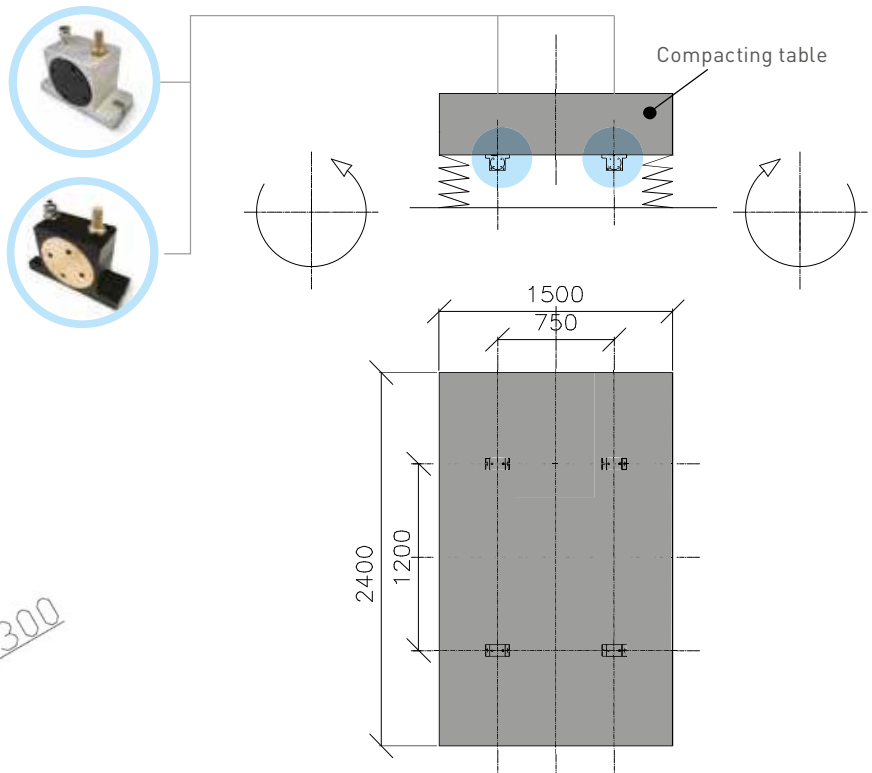
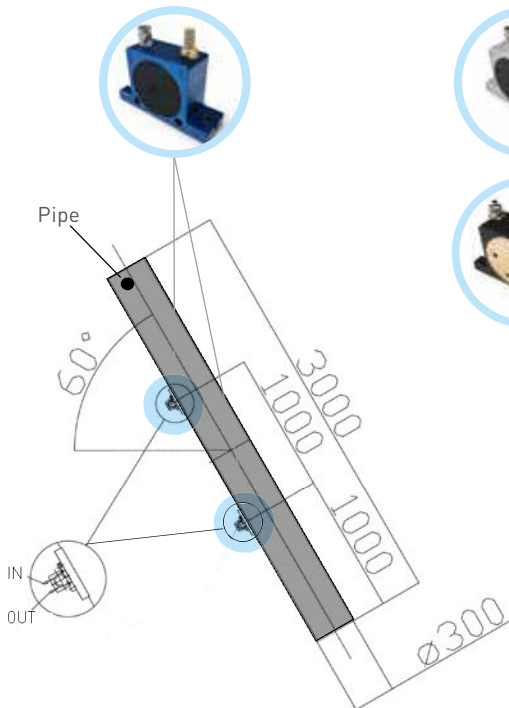
Silos  
Hoppers  
Piping  
Chutes

**Food powders**  
Sugar  
Bicarbonate  
Phosphate  
Sodium

Suitable for food and pharmaceutical applications.  
Resistant to oxidation.  
Atex II2G c Tx  
Atex II2D c Tx

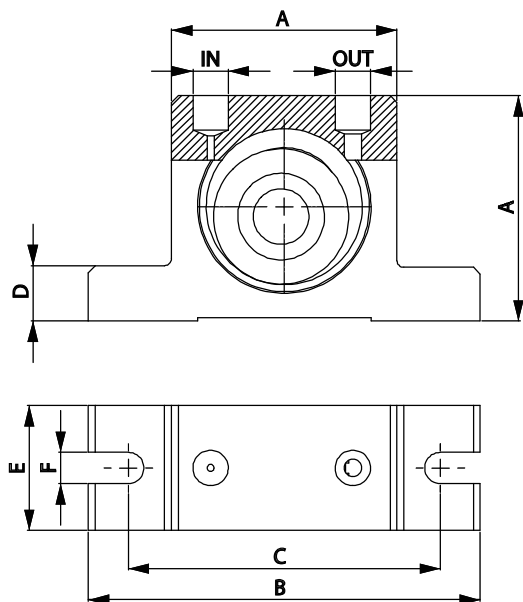
High performance  
Silent  
Low air consumption

## APPLICATIONS





# OR - Rotary pneumatic vibrators - Roller



DIMENSIONAL SPECIFICATIONS

MODEL	A		B		C		D		E		F		IN-OUT	WEIGHT	
	mm	in	mm	in	mm	in	mm	in	mm	in	mm	in		kg	lb
OR50	50	2.0	86	3.4	68	2.7	12	0.5	30	1.2	7	0.3	1/8" BSPP	0.37	0.81
OR65	65	2.6	113	4.5	90	3.5	16	0.6	36	1.4	9	0.4	1/4" BSPP	0.76	1.67
OR80	80	3.2	128	5.1	102	4.0	16	0.6	40	1.6	9	0.4	1/4" BSPP	1.27	2.79
OR100	100	3.9	160	6.3	130	5.1	20	0.8	52	2.1	11	0.4	1/4"-3/8" BSPP	2.60	5.72

MODEL	VIBRATION			C.F. MAX						AIR CONSUMPTION					
	Vpm			2 bar (29 psi)		4 bar (58psi)		6 bar (87psi)		2 bar (29 psi)		4 bar (58psi)		6 bar (87psi)	
	2 bar (29 psi)	4 bar (58psi)	6 bar (87psi)	kg	lb	kg	lb	kg	lb	l/min*	CF/min	l/min*	CF/min	l/min*	CF/min
OR50	21000	25000	29500	188	413	281	619	355	780	78	2.8	144	5.1	204	7.2
OR65	19000	22000	26000	235	516	439	966	552	1215	100	3.5	198	7.0	296	10.5
OR80	14000	16000	21500	342	752	587	1292	624	1373	122	4.3	255	9.0	378	13.3
OR100	6750	9750	11000	289	637	604	1329	783	1722	132	4.7	284	10.0	412	14.5

\* Indicates in l/min the total air consumption normalized at the rated pressure.

## OR - ROTARY PNEUMATIC VIBRATORS - ROLLER

APPLICATION	Hopper and silo - piping - chute - concrete compaction
POWDER	Hygroscopic
PROBLEM SOLVING	Friction reduction - compaction

## FEATURES

DUTY CYCLE	Continuous
WORKING PRESSURE	From 2 bar to 6 bar (from 29 psi to 87 psi)
PNEUMATIC CIRCUIT	Filter + flow control valve + lubrication + 3/2 ways valve
AIR SUPPLY QUALITY	Class 5.4.4.
WORKING TEMPERATURE	From -20 °C to 200 °C (from -4 °F to 392 °F)
MAX NOISE LEVEL	<90 dB(a)
TECHNOLOGY	Roller vibration - high frequency and centrifugal force
ATEX	II 2D C TX II 2G C TX
MATERIAL	Aluminium body and brass cover



This information is furnished without warranty, representation, inducement or license of any kind. It is accurate to the best OLI knowledge or is obtained from sources believed to be accurate. OLI therefore assumes no legal responsibility. The latest and most updated information are available online.