


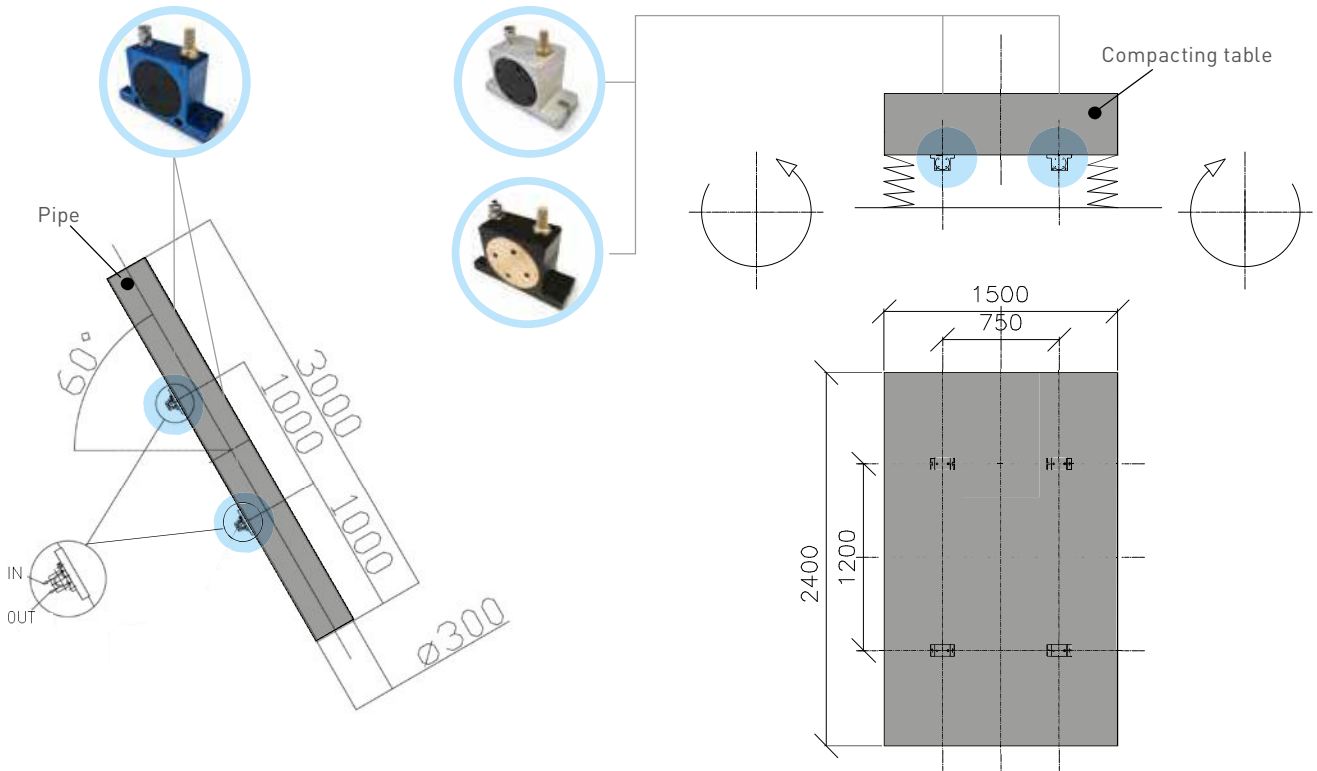


# EXTERNAL APPLICATION

## ROTARY PNEUMATIC VIBRATORS

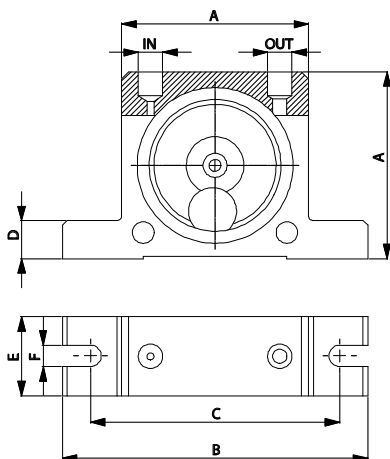
| PRODUCT SERIES   | APPLICATIONS  | POWDERS   | FEATURES  | BENEFITS   |
|--|---|---|---|--|
| <b>BALL VIBRATORS</b><br><b>S</b><br>       | Silos<br>Hoppers<br>Piping<br>Chutes<br>Compacting          | <b>Dry powders</b><br>Granules<br>Plastics<br>Sand<br>Ashes<br>Cement<br>Lime | Filter sleeve cleaning.<br>Suitable for outdoor use.<br>Resistant to oxidation.<br>Atex II2G c Tx<br>Atex II2D c Tx     | Economical<br>Low air consumption<br>High frequency vibration  |
| <b>ROLLER VIBRATORS</b><br><b>OR</b><br>    | Silos<br>Hoppers<br>Piping<br>Chutes<br>Concrete compaction | <b>Hygroscopic powders</b><br>Cement<br>Concrete<br>Sand<br>Foundry sand      | Compact and robust design.<br>Suitable for outdoor use.<br>Resistant to oxidations.<br>Atex II2G c Tx<br>Atex II2D c Tx | High centrifugal force<br>Low air consumption<br>High frequency vibration<br>Suitable for high temperature |
| <b>TURBINE VIBRATORS</b><br><b>OT</b><br> | Silos<br>Hoppers<br>Piping<br>Chutes                        | <b>Food powders</b><br>Sugar<br>Bicarbonate<br>Phosphate<br>Sodium            | Suitable for food and pharmaceutical applications.<br>Resistant to oxidation.<br>Atex II2G c Tx<br>Atex II2D c Tx       | High performance<br>Silent<br>Low air consumption  |

## APPLICATIONS





# S - Rotary pneumatic vibrators - Ball



| DIMENSIONAL SPECIFICATIONS |     |     |     |     |     |     |    |     |    |     |    |     |           |        |      |
|----------------------------|-----|-----|-----|-----|-----|-----|----|-----|----|-----|----|-----|-----------|--------|------|
| MODEL                      | A   |     | B   |     | C   |     | D  |     | E  |     | F  |     | IN-OUT    | WEIGHT |      |
|                            | mm  | in  | mm  | in  | mm  | in  | mm | in  | mm | in  | mm | in  |           | kg     | lb   |
| S8                         | 50  | 2.0 | 86  | 3.4 | 68  | 2.7 | 12 | 0.5 | 20 | 0.8 | 7  | 0.3 | 1/8" BSPP | 0.13   | 0.29 |
| S10                        | 50  | 2.0 | 86  | 3.4 | 68  | 2.7 | 12 | 0.5 | 20 | 0.8 | 7  | 0.3 | 1/8" BSPP | 0.13   | 0.29 |
| S13                        | 65  | 2.6 | 113 | 4.5 | 90  | 3.5 | 16 | 0.6 | 25 | 1.0 | 9  | 0.4 | 1/4" BSPP | 0.26   | 0.57 |
| S16                        | 65  | 2.6 | 113 | 4.5 | 90  | 3.5 | 16 | 0.6 | 28 | 1.1 | 9  | 0.4 | 1/4" BSPP | 0.30   | 0.66 |
| S20                        | 80  | 3.2 | 128 | 5.1 | 104 | 4.1 | 16 | 0.6 | 33 | 1.3 | 9  | 0.4 | 1/4" BSPP | 0.53   | 1.17 |
| S25                        | 80  | 3.2 | 128 | 5.1 | 104 | 4.1 | 16 | 0.6 | 38 | 1.5 | 9  | 0.4 | 1/4" BSPP | 0.63   | 1.39 |
| S30                        | 100 | 3.9 | 160 | 6.3 | 130 | 5.1 | 20 | 0.8 | 45 | 1.8 | 11 | 0.4 | 3/8" BSPP | 1.13   | 2.49 |
| S36                        | 100 | 3.9 | 160 | 6.3 | 130 | 5.1 | 20 | 0.8 | 50 | 2.0 | 11 | 0.4 | 3/8" BSPP | 1.34   | 2.95 |

| MODEL | VIBRATION      |               |                | C.F. MAX       |     |               |     |                |     | AIR CONSUMPTION |        |               |        |                |        |
|-------|----------------|---------------|----------------|----------------|-----|---------------|-----|----------------|-----|-----------------|--------|---------------|--------|----------------|--------|
|       | Vpm            |               |                | 2 bar (29 psi) |     | 4 bar (58psi) |     | 6 bar (87 psi) |     | 2 bar (29 psi)  |        | 4 bar (58psi) |        | 6 bar (87 psi) |        |
|       | 2 bar (29 psi) | 4 bar (58psi) | 6 bar (87 psi) | kg             | lb  | kg            | lb  | kg             | lb  | l/min*          | CF/min | l/min*        | CF/min | l/min*         | CF/min |
| S8    | 25500          | 31000         | 35000          | 13             | 29  | 26            | 57  | 36             | 79  | 83              | 2.9    | 145           | 5.1    | 195            | 6.9    |
| S10   | 22500          | 28000         | 34000          | 25             | 55  | 47            | 103 | 71             | 156 | 92              | 3.2    | 150           | 5.3    | 200            | 7.1    |
| S13   | 15000          | 18500         | 22500          | 32             | 70  | 55            | 121 | 87             | 191 | 94              | 3.3    | 158           | 5.6    | 225            | 7.9    |
| S16   | 13000          | 17000         | 19500          | 45             | 99  | 80            | 176 | 110            | 242 | 122             | 4.3    | 200           | 7.1    | 280            | 9.9    |
| S20   | 10500          | 14500         | 16500          | 72             | 158 | 122           | 268 | 172            | 378 | 130             | 4.6    | 230           | 8.1    | 340            | 12.0   |
| S25   | 9200           | 12200         | 14000          | 93             | 205 | 157           | 345 | 205            | 451 | 160             | 5.7    | 290           | 10.2   | 425            | 15.0   |
| S30   | 7800           | 9700          | 12500          | 151            | 332 | 247           | 543 | 321            | 706 | 215             | 7.6    | 375           | 13.2   | 570            | 20.1   |
| S36   | 7300           | 9000          | 10000          | 206            | 453 | 315           | 693 | 405            | 891 | 260             | 9.2    | 475           | 16.8   | 675            | 23.8   |

\* Indicates in l/min the total air consumption normalized at the rated pressure.

## S - ROTARY PNEUMATIC VIBRATORS - BALL

|                     |  |
|---------------------|--|
| APPLICATION         | Hopper and silo - screen - vibrating table - chute         |
| POWDER              | Dry and granular   |
| PROBLEM SOLVING     | Friction reduction - separation                            |
| <b>FEATURES</b>     |  |
| DUTY CYCLE          | Continuous   |
| WORKING PRESSURE    | From 2 bar to 6 bar (from 29 psi to 87 psi)                |
| PNEUMATIC CIRCUIT   | Filter + flow control valve + lubrication + 3/2 ways valve |
| AIR SUPPLY QUALITY  | Class 5.4.4.   |
| WORKING TEMPERATURE | From -20 °C to 200 °C (from -4 °F to 392 °F)               |
| MAX NOISE LEVEL     | 90 dB(a)   |
| TECHNOLOGY          | Rotary vibration - high frequency                          |
| ATEX                | II 2D C TX<br>II 2G C TX                                   |
| MATERIAL            | Aluminium body and zinc plate cover                        |

