

GRZ 20-16 SERIES

This body size with standard length jaws is able to apply 65 N of force at midpoint of the jaw. The L-Type jaw is able to apply 42 N of force at the midpoint of the jaw.

Requirements

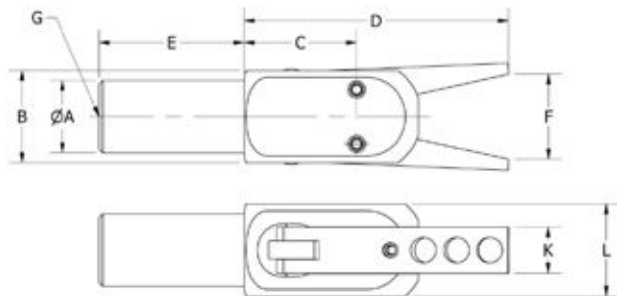
- Maximum air pressure 87 psi (6 bar).
- Requires filtered dry air.
- 20mm Mounting Clamp.

Jaw Types Available:

					
Standard-Type The Standard-Type jaws come with a knurled pattern on the jaw-face to better grip the sprue / part.	A-Type The A-Type jaws have 2 holes for mounting custom jaws to the body.	C-Type The C-Type jaws have sensors added to them to detect when the jaws are in the closed state with a sprue / part clamped within them.	KT-Type The KT-Type jaws have an equatorial diameter to pick parts that are round.	L-Type The L-Type jaws increase the length to allow for a greater variation in location of the sprue / part.	NP-Type The NP-Type jaws add nitrile rubber pad to the jaws to prevent marring of finished parts.
					
NPC-Type The NPC-Type has long jaws with the full surface of saw teeth.	R-Type The R-Type jaw removes the countersinks from the jaw face.	ST-Type The ST-Type jaw adds aggressive teeth to clamp into the sprue.	T-Type The T-Type jaws adds diagonal teeth to the jaw-face to prevent slipping of the material being grabbed.	VP-Type VP-Type jaws add Viton rubber pads to the jaws to prevent marring of finished parts.	VPC-Type The VPC-Type has long jaws with the full surface of saw teeth.

GRZ 20-16 PART/SPRUE PLIER

Product Code: GRZ 20-16

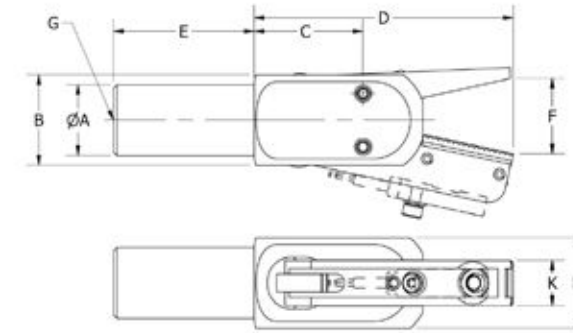


	A	B	C	D	E	F	G	K	L	Force (N)	Weight (g)	Piab No.
GRZ 20-16	20	25	32	73	24	23	G 1/8	13	25	65	141	0213192

- Bullet nose design for jaw spring protection.
- Single action spring return function.
- Fully compatible with Piab's modular EOAT/gripper system.
- Anodized finish.
- Requires 20mm Mounting Clamp.

GRZ 20-16 C/... SPRUE/PARTS PLIER

Product Code: GRZ 20-16 C/...

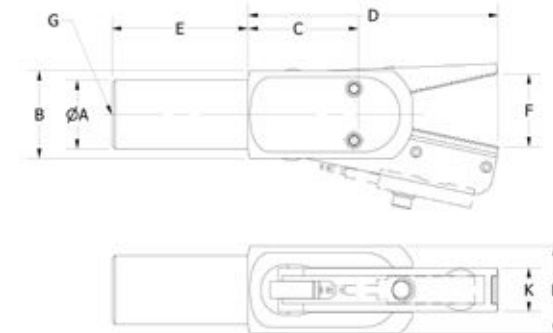


	A	B	C	D	E	F	G	K	L	Force (N)	Sensor (Inc.)	Weight (g)	Piab No.
GRZ 20-16 C-N	20	25	32	73	23	21	G 1/8	13	25	65	SN 1.5	63	0213463
GRZ 20-16 C-N8	20	25	32	73	23	21	G 1/8	13	25	65	SN 1.5-P	63	0213465
GRZ 20-16 C-P	20	25	32	73	23	21	G 1/8	13	25	65	SP 1.5	63	0213437
GRZ 20-16 C-P8	20	25	32	73	23	21	G 1/8	13	25	65	SP 1.5-P	63	0213462

- The C-Type jaws have sensors added to them to detect when the jaws are in the closed state with a sprue/part clamped within them.
- Bullet nose design for jaw spring protection.
- Single action spring return function.
- Fully compatible with Piab's modular EOAT/gripper system.
- Anodized finish.
- External sensor does not require adjustment.

GRZ 20-16 CT SPRUE/PARTS PLIER

Product Code: GRZ 20-16 CT

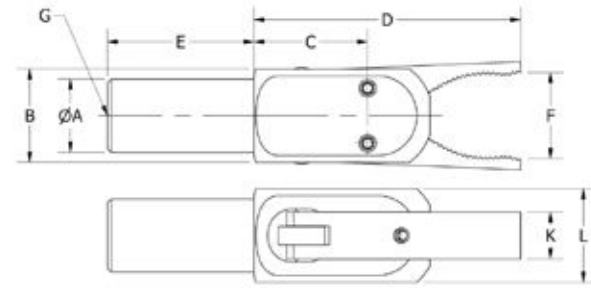


	A	B	C	D	E	F	G	K	L	Force (N)	Weight (g)	Piab No.
GRZ 20-16 CT-N	20	25	32	73	23	21	G 1/8	13	25	65	166	0215374
GRZ 20-16 CT-N8	20	25	32	73	23	21	G 1/8	13	25	65	166	0215383
GRZ 20-16 CT-P	20	25	32	73	23	21	G 1/8	13	25	65	166	0215957
GRZ 20-16 CT-P8	20	25	32	73	23	21	G 1/8	13	25	65	166	0215958

- The C-Type jaws have sensors added to them to detect when the jaws are in the closed state with a sprue/part clamped within them.
- The T-Type jaws adds diagonal teeth to the jaw-face to prevent slipping of the material being grabbed.
- Bullet nose design for jaw spring protection.
- Single action spring return function.
- Fully compatible with Piab's modular EOAT/gripper system.
- Anodized finish.
- External sensor does not require adjustment

GRZ 20-16 KT SPRUE/PART PLIERS

Product Code: GRZ 20-16 KT

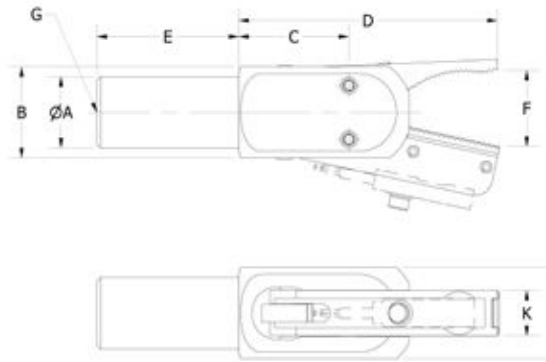


- The KT-Type jaws have an equatorial diameter to pick parts that are round.
- The T-Type jaws adds diagonal teeth to the jaw-face to prevent slipping of the material being grabbed.
- Bullet nose design for jaw spring protection.
- Single action spring return function.
- Fully compatible with Piab's modular EOAT/gripper system.
- Anodized finish.

	A	B	C	D	E	F	G	K	L	Force (N)	Weight (g)	Piab No.
GRZ 20-16 KT	20	25	32	73	23	23	G 1/8	13	25	65	149	0214372

GRZ 20-16 KTC/... SPRUE/PARTS PLIER

Product Code: GRZ 20-16 KTC/...

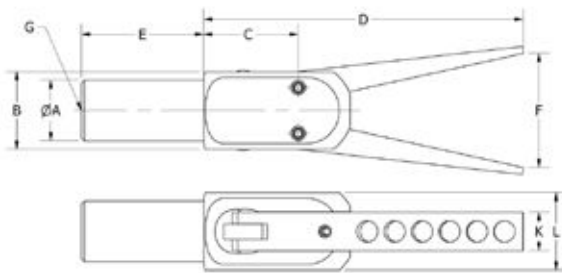


- The C-Type jaws have sensors added to them to detect when the jaws are in the closed state with a sprue/part clamped within them.
- The KT-Type jaws have an equatorial diameter to pick parts that are round.
- The T-Type jaws adds diagonal teeth to the jaw-face to prevent slipping of the material being grabbed.
- Bullet nose design for jaw spring protection.
- Single action spring return function.
- Fully compatible with Piab's modular EOAT/gripper system.
- Anodized finish.

	A	B	C	D	E	F	G	K	L	Force (N)	Sensor (Inc.)	Weight (g)	Piab No.
GRZ 20-16 KTC-N	20	25	32	73	23	21	G 1/8	13	25	65	SN 1.5	165	0215959
GRZ 20-16 KTC-N8	20	25	32	73	23	21	G 1/8	13	25	65	SN 1.5-P	165	0215960
GRZ 20-16 KTC-P	20	25	32	73	23	21	G 1/8	13	25	65	SP 1.5	165	0215961
GRZ 20-16 KTC-P8	20	25	32	73	23	21	G 1/8	13	25	65	SP 1.5-P	165	0215962

GRZ 20-16 L LONG SPRUE/PARTS PLIER

Product Code: GRZ 20-16 L

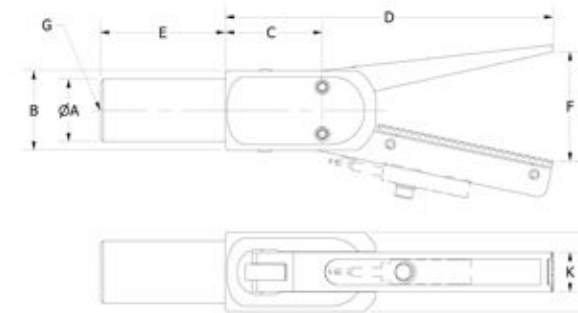


- The L-Type jaws increase the length to allow for a greater variation in location of the sprue/part.
- Bullet nose design for jaw spring protection.
- Single action spring return function.
- Fully compatible with Piab's modular EOAT/gripper system.
- Anodized finish.

	A	B	C	D	E	F	G	K	L	Force (N)	Weight (g)	Piab No.
GRZ 20-16 L	20	25	32	105	39	37	G 1/8	13	25	42	162	0214375

GRZ 20-16 LC/... LONG SPRUE/PARTS PLIER

Product Code: GRZ 20-16 LC/...

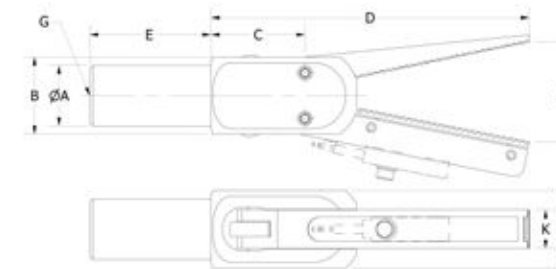


- The L-Type jaws increase the length to allow for a greater variation in location of the sprue/part.
- The C-Type jaws have sensors added to them to detect when the jaws are in the closed state with a sprue/part clamped within them.
- Bullet nose design for jaw spring protection.
- Single action spring return function.
- Fully compatible with Piab's modular EOAT/gripper system.
- Anodized finish.
- External sensor does not require adjustment.

	A	B	C	D	E	F	G	K	L	Force (N)	Sensor (Inc.)	Weight (g)	Piab No.
GRZ 20-16 LC-N	20	25	32	105	37	32	G 1/8	13	25	42	SN 1.5	128	0215963
GRZ 20-16 LC-N8	20	25	32	105	37	32	G 1/8	13	25	42	SN 1.5-P	128	0215964
GRZ 20-16 LC-P	20	25	32	105	37	32	G 1/8	13	25	42	SP 1.5	128	0215965
GRZ 20-16 LC-P8	20	25	32	105	37	32	G 1/8	13	25	42	SP 1.5-P	128	0215966

GRZ 20-16 LCT/... LONG SPRUE/PARTS PLIER

Product Code: GRZ 20-16 LCT/...

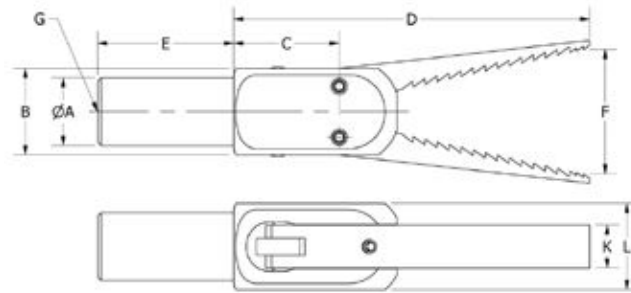


- The C-Type jaws have sensors added to them to detect when the jaws are in the closed state with a sprue/part clamped within them.
- The L-Type jaws increase the length to allow for a greater variation in location of the sprue/part.
- The T-Type jaws adds diagonal teeth to the jaw-face to prevent slipping of the material being grabbed.
- Bullet nose design for jaw spring protection.
- Single action spring return function.
- Fully compatible with Piab's modular EOAT/gripper system.
- Anodized finish.
- External sensor does not require adjustment.

	A	B	C	D	E	F	G	K	L	Force (N)	Sensor (Inc.)	Weight (g)	Piab No.
GRZ 20-16 LCT-P	20	25	32	105	37	32	G 1/8	13	25	42	SP 1.5	157	0213771
GRZ 20-16 LCT-P8	20	25	32	105	37	32	G 1/8	13	25	42	SP 1.5-P	157	0213772
GRZ 20-16 LCT-N	20	25	32	105	37	32	G 1/8	13	25	42	SN 1.5	157	0213773
GRZ 20-16 LCT-N8	20	25	32	105	37	32	G 1/8	13	25	42	SN 1.5-P	157	0213774

GRZ 20-16 LST LONG SAW TOOTH SPRUE/PART PLIER

Product Code: GRZ 20-16 LST

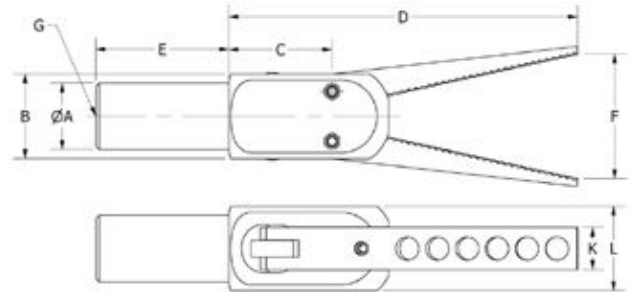


- The L-Type jaws increase the length to allow for a greater variation in location of the sprue/part.
- The ST-Type jaw adds aggressive teeth to clamp into the sprue.
- Bullet nose design for jaw spring protection.
- Single action spring return function.
- Fully compatible with Piab's modular EOAT/gripper system.
- Anodized finish.

	A	B	C	D	E	F	G	K	L	Force (N)	Weight (g)	Piab No.
GRZ 20-16 LST	20	25	32	105	39	36	G 1/8	13	25	42	154	0214379

GRZ 20-16 LT LONG SPRUE/PARTS PLIER

Product Code: GRZ 20-16 LT

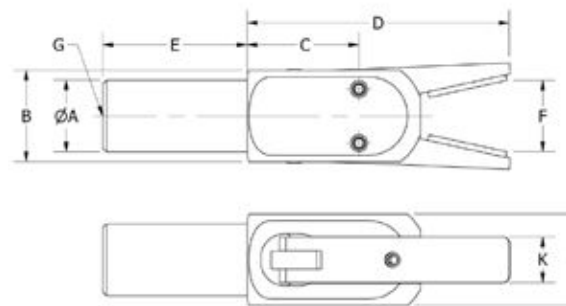


- The L-Type jaws increase the length to allow for a greater variation in location of the sprue/part.
- The T-Type jaws adds diagonal teeth to the jaw-face to prevent slipping of the material being grabbed.
- Bullet nose design for jaw spring protection.
- Single action spring return function.
- Fully compatible with Piab's modular EOAT/gripper system.
- Anodized finish.

	A	B	C	D	E	F	G	K	L	Force (N)	Weight (g)	Piab No.
GRZ 20-16 LT	20	25	32	105	39	37	G 1/8	13	25	42	219	0213209

GRZ 20-16 NP PART/SPRUE GRIPPER

Product Code: GRZ 20-16 NP

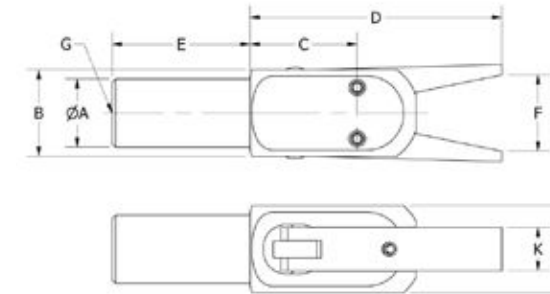


- Bullet nose design for jaw spring protection.
- Fully compatible with Piab's modular EOAT/gripper system.
- Anodized finish.
- The jaw is lined with non-marking neoprene rubber.
- The temperature range is -30° - 220° F (-34° - 104° C).
- The tensile strength of the neoprene is 1200 psi.

	A	B	C	D	E	F	G	K	L	Force (N)	Weight (g)	Piab No.
GRZ 20-16 NP	20	25	32	73	40	21	G 1/8	13	25	65	150	0213204

GRZ 20-16 R SPRUE/PARTS PLIER

Product Code: GRZ 20-16 R

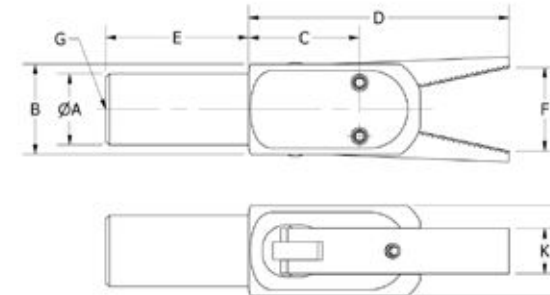


- Flat and smooth with no gripping pattern to avoid marking of a part being gripped.
- Bullet nose design for jaw spring protection.
- Single action spring return function.
- Fully compatible with Piab's modular EOAT/gripper system.
- Anodized finish.

	A	B	C	D	E	F	G	K	L	Force (N)	Weight (g)	Piab No.
GRZ 20-16 R	20	25	32	73	25	23	G 1/8	13	25	65	169	0214383

GRZ 20-16 RT SPRUE/PARTS PLIER

Product Code: GRZ 20-16 RT

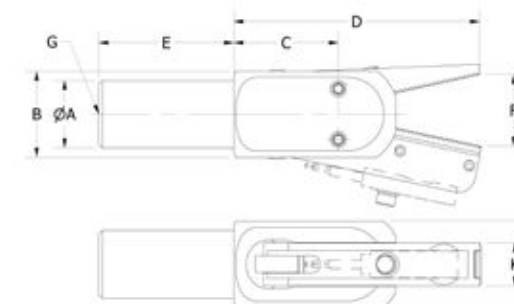


- Flat with teeth, allowing for a larger gripping surface area. This prevents hot plastic from getting caught inside the countersink holes of the T-type jaws.
- Bullet nose design for jaw spring protection.
- Single action spring return function.
- Fully compatible with Piab's modular EOAT/gripper system.
- Anodized finish.

	A	B	C	D	E	F	G	K	L	Force (N)	Weight (g)	Piab No.
GRZ 20-16 RT	20	25	32	73	25	23	G 1/8	13	25	65	362	0214385

GRZ 20-16 RTC/... SPRUE/PART PLIER

Product Code: GRZ 20-16 RTC/...

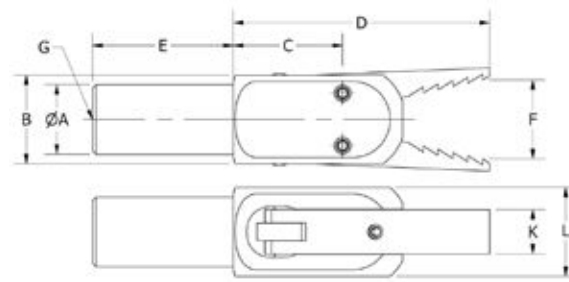


- The RT-Type jaw is flat with teeth, allowing for a larger gripping surface area. This prevents hot plastic from getting caught inside the countersink holes of the T-type.
- Bullet nose design for jaw spring protection.
- Single action spring return function.
- Fully compatible with Piab's modular EOAT/gripper system.
- Anodized finish.
- External sensor does not require adjustment.

	A	B	C	D	E	F	G	K	L	Force (N)	Sensor (Inc.)	Weight (g)	Piab No.
GRZ 20-16 RTC-N	20	25	32	73	25	21	G 1/8	13	25	65	SN 1.5	177	0215967
GRZ 20-16 RTC-N8	20	25	32	73	25	21	G 1/8	13	25	65	SN 1.5-P	177	0215968
GRZ 20-16 RTC-P	20	25	32	73	25	21	G 1/8	13	25	65	SP 1.5	177	0215969
GRZ 20-16 RTC-P8	20	25	32	73	25	21	G 1/8	13	25	65	SP 1.5-P	177	0215970

GRZ 20-16 ST SPRUE/PARTS PLIER

Product Code: GRZ 20-16 ST

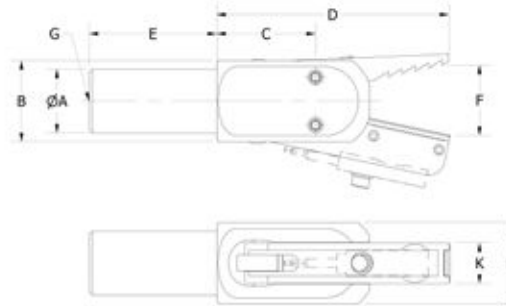


- The ST-Type jaw adds aggressive teeth to clamp into the sprue.
- Bullet nose design for jaw spring protection.
- Single action spring return function.
- Fully compatible with Piab's modular EOAT/gripper system.
- Anodized finish.

	A	B	C	D	E	F	G	K	L	Force (N)	Weight (g)	Piab No.
GRZ 20-16 ST	20	25	32	73	23	23	G 1/8	13	25	65	46	0213198

GRZ 20-16 STC/... SPRUE /PART PLIER

Product Code: GRZ 20-16 STC/...

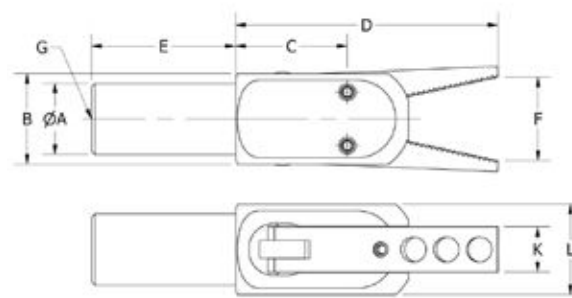


- The ST-Type jaw adds aggressive teeth to clamp into the sprue.
- Bullet nose design for jaw spring protection.
- Single action spring return function.
- Fully compatible with Piab's modular EOAT/gripper system.
- Anodized finish.
- External sensor does not require adjustment.

	A	B	C	D	E	F	G	K	L	Force (N)	Sensor (Inc.)	Weight (g)	Piab No.
GRZ 20-16 STC-N	20	25	32	73	23	21	G 1/8	13	25	65	SN 1.5	170	0213748
GRZ 20-16 STC-N8	20	25	32	73	23	21	G 1/8	13	25	65	SN 1.5-P	170	0213749
GRZ 20-16 STC-P	20	25	32	73	23	21	G 1/8	13	25	65	SP 1.5	170	0213746
GRZ 20-16 STC-P8	20	25	32	73	23	21	G 1/8	13	25	65	SP 1.5-P	170	0213747

GRZ 20-16 T SPRUE/PARTS PLIER WITH TEETH

Product Code: GRZ 20-16 T

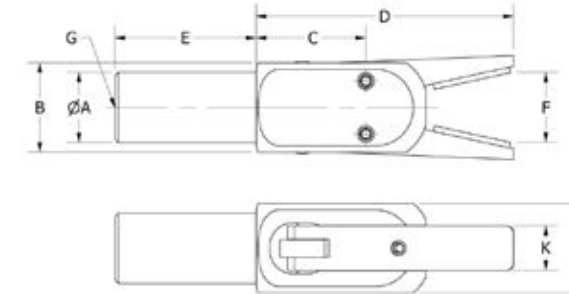


- The T-Type jaws adds diagonal teeth to the jaw-face to prevent slipping of the material being grabbed.
- Bullet nose design for jaw spring protection.
- Single action spring return function.
- Fully compatible with Piab's modular EOAT/gripper system.
- Anodized finish.

	A	B	C	D	E	F	G	K	L	Force (N)	Weight (g)	Piab No.
GRZ 20-16 T	20	25	32	73	25	23	G 1/8	13	25	65	143	0214389

GRZ 20-16 VP PART/SPRUE GRIPPER WITH PADDED JAW

Product Code: GRZ 20-16 VP

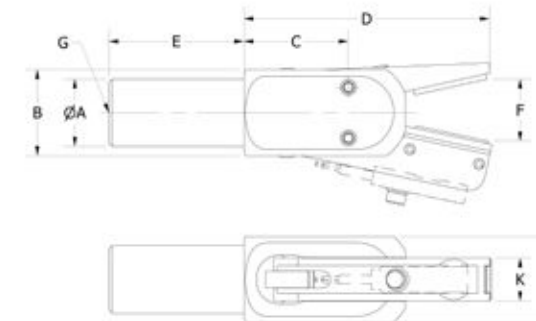


- Jaws add Viton rubber pad to the jaws to prevent marring of finished parts.
- Bullet nose design for jaw spring protection.
- Fully compatible with Piab's modular EOAT/gripper system.
- Anodized finish.
- The jaw is lined with ultra-strength corrosion resistant Viton Rubber.
- The temperature range is 0° - 400° F (-17° - 204° C).
- The tensile strength of the Viton is 1500 psi.

	A	B	C	D	E	F	G	K	L	Force (N)	Weight (g)	Piab No.
GRZ 20-16 VP	20	25	32	73	40	21	G 1/8	13	25	65	150	0214391

GRZ 20-16 VPC/... PART/SPRUE GRIPPER WITH PADDED JAW

Product Code: GRZ 20-16 VPC/...



- Jaws add Viton rubber pad to the jaws to prevent marring of finished parts.
- Bullet nose design for jaw spring protection.
- Fully compatible with Piab's modular EOAT/gripper system.
- Anodized finish.
- The jaw is lined with ultra-strength corrosion resistant Viton Rubber.
- The temperature range is 0° - 400° F (-17° - 204° C).
- The tensile strength of the Viton is 1500 psi.
- External sensor does not require adjustment.

	A	B	C	D	E	F	G	K	L	Force (N)	Sensor (Inc.)	Weight (g)	Piab No.
GRZ 20-16 VP-N	20	25	32	73	40	21	G 1/8	13	25	65	SN 1.5	150	0215971
GRZ 20-16 VP-N8	20	25	32	73	40	21	G 1/8	13	25	65	SN 1.5-P	150	0215972
GRZ 20-16 VP-P	20	25	32	73	40	21	G 1/8	13	25	65	SP 1.5	150	0215973
GRZ 20-16 VP-P8	20	25	32	73	40	21	G 1/8	13	25	65	SP 1.5-P	150	0215974

GRZ 20-22 SERIES

This body size is able to apply 110 N of force at midpoint of the jaw.

Requirements

- Maximum air pressure 87 psi (6 bar).
- Requires filtered dry air.

Jaw Types Available:



Standard-Type

The Standard-Type jaws come with a knurled pattern on the jaw-face to better grip the sprue / part.

C-Type

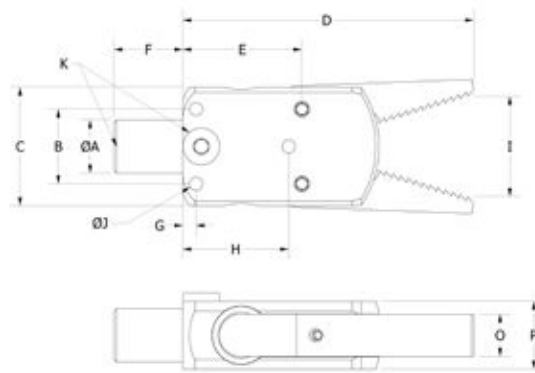
The C-Type jaws have sensors added to them to detect when the jaws are in the closed state with a sprue / part clamped within them.

KT-Type

The KT-Type jaws have an equatorial diameter to pick parts that are round.

GRZ 20-22 PART/SPRUE GRIPPER WITH TEETH

Product Code: GRZ 20-22

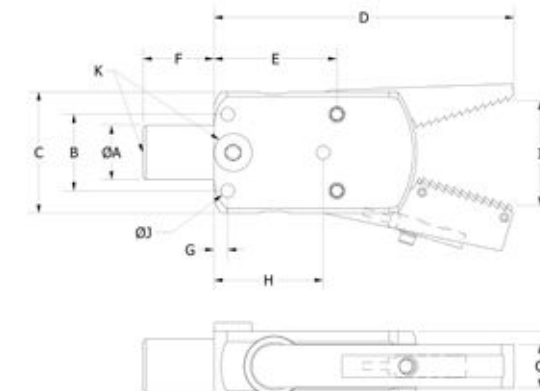


- Standard jaw-face with teeth.
- Single action spring return function.
- Fully compatible with Piab's modular EOAT/gripper system.
- Anodized finish.

	A	B	C	D	E	F	G	H	I	J	K	O	P	Force (N)	Weight (g)	Piab No.
GRZ 20-22	20	28	45	110	45	26	5	40	37	5	G 1/8	16	25	110	365	0214394

GRZ 20-22 C/... PART/SPRUE GRIPPER

Product Code: GRZ 20-22 C/...

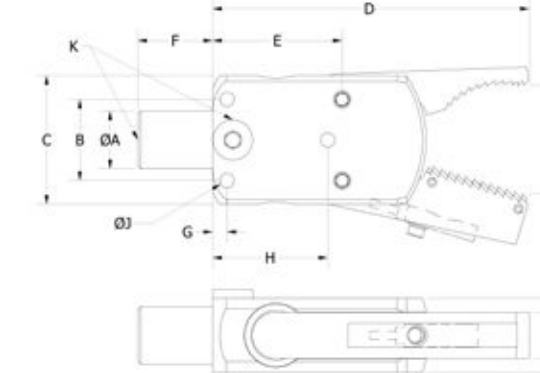
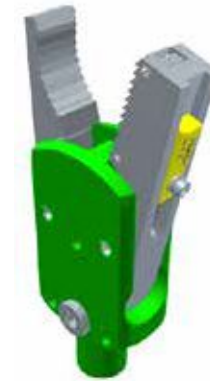


- The C-Type jaws have sensors added to them to detect when the jaws are in the closed state with a sprue/part clamped within them.
- Single action spring return function.
- Fully compatible with Piab's modular EOAT/gripper system.
- Anodized finish.
- External sensor does not require adjustment.

	A	B	C	D	E	F	G	H	I	J	K	O	P	Force (N)	Sensor (Inc.)	Weight (g)	Piab No.
GRZ 20-22 C-N	20	28	45	110	45	26	5	40	37	5	G 1/8	16	25	110	SN 1.5	380	0215975
GRZ 20-22 C-N8	20	28	45	110	45	26	5	40	37	5	G 1/8	16	25	110	SN 1.5-P	380	0215976
GRZ 20-22 C-P	20	28	45	110	45	26	5	40	37	5	G 1/8	16	25	110	SP 1.5	380	0215977
GRZ 20-22 C-P8	20	28	45	110	45	26	5	40	37	5	G 1/8	16	25	110	SP 1.5-P	380	0215978

GRZ 20-22 KTC/... PART/SPRUE GRIPPER

Product Code: GRZ 20-22 KTC/...



- The C-Type jaws have sensors added to them to detect when the jaws are in the closed state with a sprue/part clamped within them.
- The KT-Type jaws have an equatorial diameter to pick parts that are round.
- Single action spring return function.
- Fully compatible with Piab's modular EOAT/gripper system.
- Anodized finish.
- Compact yet strong grip force.
- External sensor does not require adjustment.

	A	B	C	D	E	F	G	H	I	J	K	O	P	Force (N)	Sensor (Inc.)	Weight (g)	Piab No.
GRZ 20-22 KTC-N	20	28	45	110	45	26	5	40	37	5	G 1/8	16	25	110	SN 1.5	168	0215979
GRZ 20-22 KTC-N8	20	28	45	110	45	26	5	40	37	5	G 1/8	16	25	110	SN 1.5-P	168	0215980
GRZ 20-22 KTC-P	20	28	45	110	45	26	5	40	37	5	G 1/8	16	25	110	SP 1.5	168	0215981
GRZ 20-22 KTC-P8	20	28	45	110	45	26	5	40	37	5	G 1/8	16	25	110	SP 1.5-P	168	0215982

GRZ 20-22 G SERIES

This body size with standard length jaws is able to apply 145 N of force at midpoint of the jaw. The L-Type jaw is able to apply 100 N of force at the midpoint of the jaw.

Requirements

- Maximum air pressure 87 psi (6 bar).
- Requires filtered dry air.

Jaw Types Available:



C-Type

The C-Type jaws have sensors added to them to detect when the jaws are in the closed state with a sprue / part clamped within them.



KT-Type

The KT-Type jaws have an equatorial diameter to pick parts that are round.



LST-Type

The LST-Type has long jaws with the full surface of saw teeth.



ST-Type

The ST-Type jaw adds aggressive teeth to clamp into the sprue.



STC-Type

The STC-Type saw tooth jaw adds aggressive teeth to clamp into the sprue including external sensor.

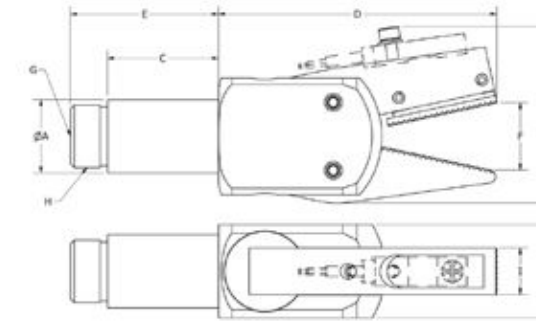
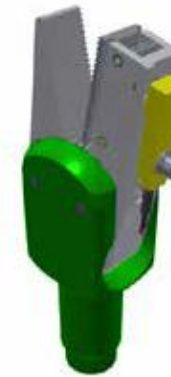


T-Type

The T-Type jaws adds diagonal teeth to the jaw-face to prevent slipping of the material being grabbed.

GRZ 20-22 G-CT/... PART/SPRUE GRIPPER

Product Code: GRZ 20-22 G-CT/...

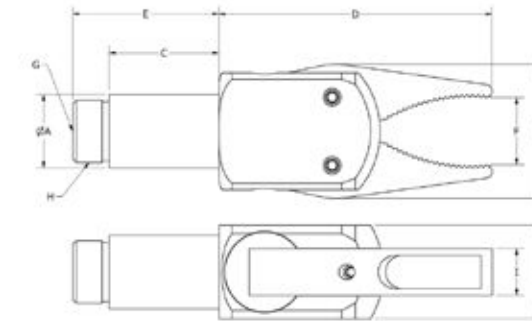


- The C-Type jaws have sensors added to them to detect when the jaws are in the closed state with a sprue / part clamped within them.
- The T-Type jaws adds diagonal teeth to the jaw-face to prevent slipping of the material being grabbed.
- Single action spring return function.
- Fully compatible with Piab's modular EOAT/gripper system.
- Anodized finish.
- Compact yet strong grip force.
- External sensor does not require adjustment.

	A	B	C	D	E	F	G	H	I	J	Force (N)	Sensor (Inc.)	Piab No.
GRZ 20-22 G-CT-N	20	48.5	30	75	40	20	G1/8	M17x1	13	25	145	SN 1.5	0215983
GRZ 20-22 G-CT-N8	20	48.5	30	75	40	20	G1/8	M17x1	13	25	145	SN 1.5-P	0215984
GRZ 20-22 G-CT-P	20	48.5	30	75	40	20	G1/8	M17x1	13	25	145	SP 1.5	0215985
GRZ 20-22 G-CT-P8	20	48.5	30	75	40	20	G1/8	M17x1	13	25	145	SP 1.5-P	0215986

GRZ 20-22 G-KT PART/SPRUE GRIPPER

Product Code: GRZ 20-22 G-KT

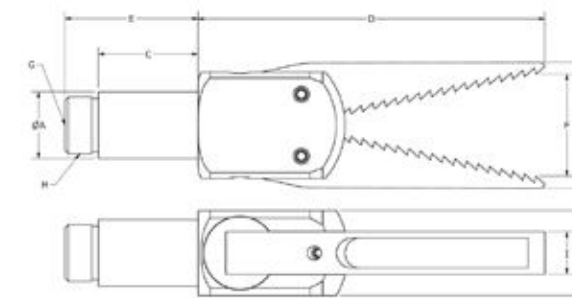


- The KT-Type jaws have an equatorial diameter to pick parts that are round.
- The T-Type jaws adds diagonal teeth to the jaw-face to prevent slipping of the material being grabbed.
- Single action spring return function.
- Fully compatible with Piab's modular EOAT/gripper system.
- Anodized finish.
- Compact yet strong grip force.

	A	B	C	D	E	F	G	H	I	J	Force (N)	Piab No.
GRZ 20-22 G-KT	20	36.5	30	75	40	21	G1/8	M17x1	13	25	145	0215371

GRZ 20-22 G-LST HIGH FORCE SPRUE/PARTS PLIER WITH LONG SAW TOOTH JAWS

Product Code: GRZ 20-22 G-LST

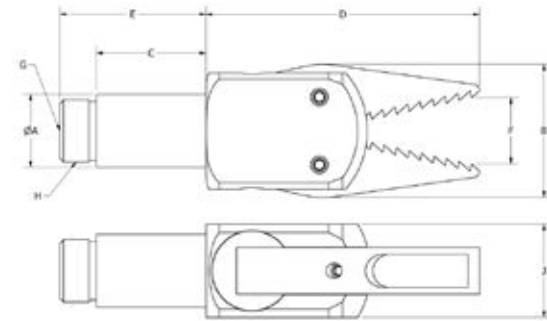


- The L-Type jaws increase the length to allow for a greater variation in location of the sprue/part.
- The ST-Type jaw adds aggressive teeth to clamp into the sprue.
- Single action spring return function.
- Fully compatible with Piab's modular EOAT/gripper system.
- Anodized finish.
- Compact yet strong grip force.

	A	B	C	D	E	F	G	H	I	J	Force (N)	Piab No.
GRZ 20-22 G-LST	20	42.5	30	104	40	35	G1/8	M17x1	13	25	100	0215372

GRZ 20-22 G-ST HIGH FORCE SPRUE/PARTS PLIER WITH SAW TOOTH JAWS

Product Code: GRZ 20-22 G-ST

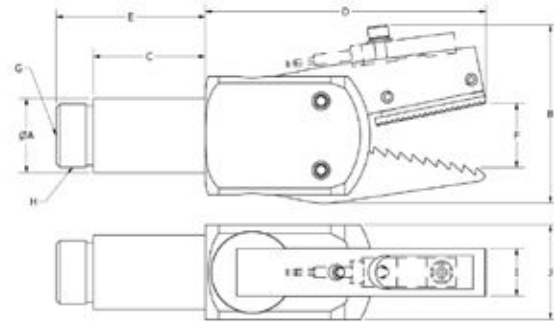


- The ST-Type jaw adds aggressive teeth to clamp into the sprue.
- Single action spring return function.
- Fully compatible with Piab's modular EOAT/gripper system.
- Anodized finish.
- Compact yet strong grip force.

	A	B	C	D	E	F	G	H	I	J	Force (N)	Piab No.
GRZ 20-22 G-ST	20	36.5	30	75	40	21	G1/8	M17x1	13	25	145	0215375

GRZ 20-22 G-STC/... HIGH FORCE SPRUE/PARTS PLIER WITH SAW TOOTH JAW AND SENSOR

Product Code: GRZ 20-22 G-STC/...

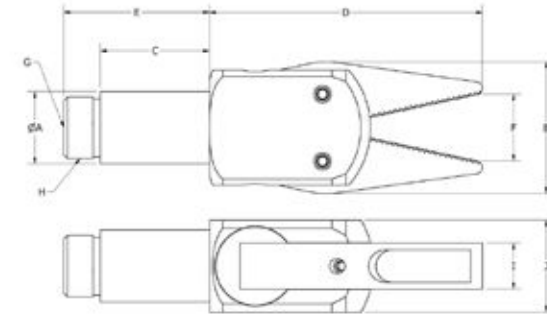


- The ST-Type jaw adds aggressive teeth to clamp into the sprue.
- Single action spring return function.
- Fully compatible with Piab's modular EOAT/gripper system.
- Anodized finish.
- Compact yet strong grip force.
- External sensor does not require adjustment.

	A	B	C	D	E	F	G	H	I	J	Force (N)	Sensor (Inc.)	Piab No.
GRZ 20-22 G-STC-N	20	52	30	75	40	21	G1/8	M17x1	13	25	145	SN 1.5	0215987
GRZ 20-22 G-STC-N8	20	52	30	75	40	21	G1/8	M17x1	13	25	145	SN 1.5-P	0215988
GRZ 20-22 G-STC-P	20	52	30	75	40	21	G1/8	M17x1	13	25	145	SP 1.5	0215989
GRZ 20-22 G-STC-P8	20	52	30	75	40	21	G1/8	M17x1	13	25	145	SP 1.5-P	0215990

GRZ 20-22 G-T HIGH FORCE SPRUE/PART PLIER WITH TEETH

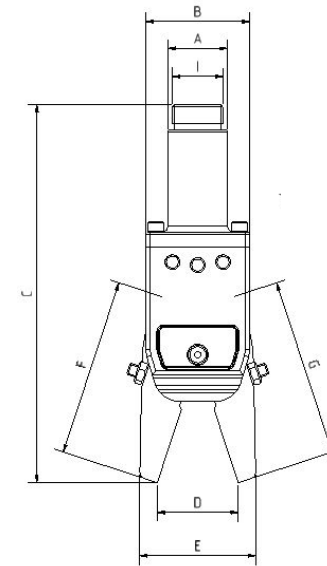
Product Code: GRZ 20-22 G-T



- The T-Type jaws adds diagonal knurl to the jaw-face to prevent slipping of the material being grabbed.
- Single action spring return function.
- Fully compatible with Piab's modular EOAT/gripper system.
- Anodized finish.
- Compact yet strong grip force.

	A	B	C	D	E	F	G	H	I	J	Force (N)	Piab No.
GRZ 20-22 G-T	20	36.5	30	75	40	21	G1/8	M17x1	13	25	145	0215377

GRIPPING PLIERS GZ20 WITHOUT SENSOR



Gripping pliers GZ12 without sensor

- Movement of the jaws by two pistons.
- No inside recuperating spring, therefore no loss of power.
- A wide range of jaws which can be combined as needed.
- Mounting diameter D = 10 mm or M10 x 1.
- 100 % compatible with common products.
- All components are anodized and offer excellent gliding properties as well as maximum wear protection.
- Easily change out jaw by loosening of the safety caps.
- Holding load of 95N at a working pressure of 6 bar.
- Pneumatic connection G1/8.

	A	B	C	D	E	F	G	Depth	I	Piab No.
GZ20 - AS50 - 10 - 10	20	35	127.5	26.5	39	60	60	25	M17x1	0213345
GZ20 - AS50 - 41 - 41	20	35	162	47	61.5	97	97	25	M17x1	0213346
GZ20 - AS50 - 50 - 50	20	35	127.5	26.5	39	60	60	25	M17x1	0213347
GZ20 - AS50 - 60 - 60	20	35	127.5	26.5	39	60	60	20	M17x1	0213348

GZ20 - AS50 - 10 - 10

Product Code:
GZ20 - AS50 - 10 - 10
• With Standard Jaws.

GZ20 - AS50 - 41 - 41

Product Code:
GZ20 - AS50 - 41 - 41
• With shaped jaws long plain/ clamping mode adjustable.

GZ20 - AS50 - 50 - 50

Product Code:
GZ20 - AS50 - 50 - 50
• With Saw Tooth Jaws.

GZ20 - AS50 - 60 - 60

Product Code:
GZ20 - AS50 - 60 - 60
• With Standards Jaws, rubberized.

