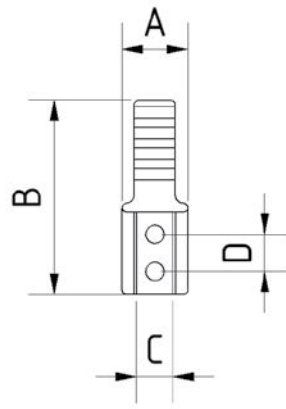
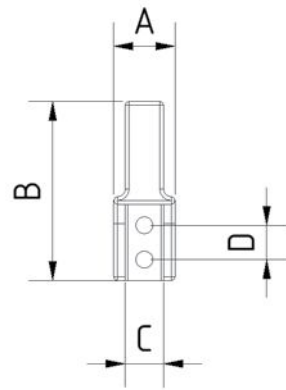


PLASTIC JAWS



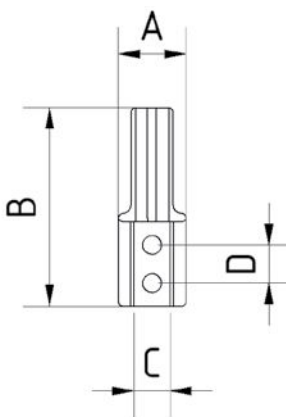
- Plastic jaws made of polyamide 12.
- Rubberized layer. Applied crosswise.

	A	B	C	D	Piab No.
KB - MHZ2 - 10 - GQ	8	27	5	5.5	0213415
KB - MHZ2 - 20 - GQ	16	47	10	9	0213417
KB - MHZ2 - 25 - GQ	20	55	12	12	0213419
KB - MHZ2 - 10 - GL	20	55	12	12	0216333
KB - MHZ2 - 20 - GL	20	55	12	12	0216334
KB - MHZ2 - 25 - GL	20	55	12	12	0216335



- Plastic jaws made of polyamide 12.
- Flocked layer.

	A	B	C	D	Piab No.
KB-MHZ2 - 10 - Flock	8	27	5	5.5	0213414
KB-MHZ2 - 20 - Flock	16	47	10	9	0213416



- Plastic jaws made of polyamide 12.
- Rubberized layer.

	A	B	C	D	Piab No.
KB - MHZ2 - 10 - GL	8	27	5	5.5	0216333
KB - MHZ2 - 20 - GL	16	47	10	9	0216334
KB - MHZ2 - 25 - GL	20	55	12	12	0216335



GRZ 10-6

This body size is able to apply 10 N force at midpoint of the jaw.

Requirements

- Maximum air pressure 87 psi (6 bar).
- Requires filtered dry air.

	A	C	D	E	F	H	I	J	K	O	P	Force (N)	Piab No.
GRZ 10-6	10	15	30	12	15	11	6	M4	M5	3	8	10	0214364

Jaw Types Available:

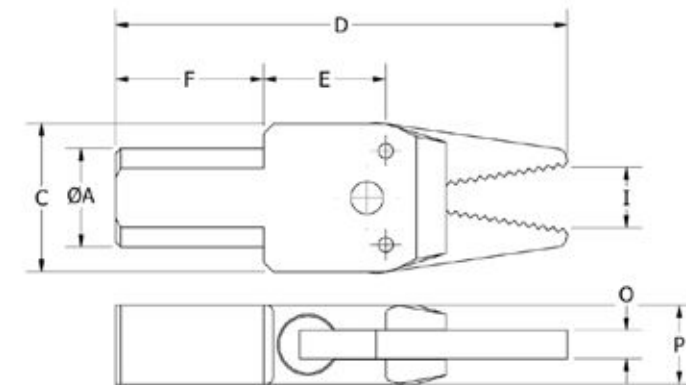


Standard-Type

The Standard-Type jaws come with a knurled pattern on the jaw-face to better grip the sprue / part.

GRZ 10-6 PART/SPRUE GRIPPER

Product Code: GRZ 10-6



- The Standard-Type jaws come with a knurled pattern on the jaw-face to better grip the sprue/part.
- Single action spring return function.
- Fully compatible with Piab's modular EOAT/gripper system.
- Requires 10mm Mounting Clamp.

GRZ 10-8

This body size is able to apply 19 N force at midpoint of the jaw.

Requirements

- Maximum air pressure 87 psi (6 bar).
- Requires filtered dry air.

	A	C	D	E	F	H	I	J	K	O	P	Force (N)	Sensor (Optional)	Piab No.
GRZ 10-8	10	20	40	16	15	14	8	M6	M5	4	10	19	-	0214365
GRZ 10-8 C	10	20	40	16	15	14	8	M6	M5	4	10	19	Built-in Sensor	0214366

Jaw Types Available:



Standard-Type

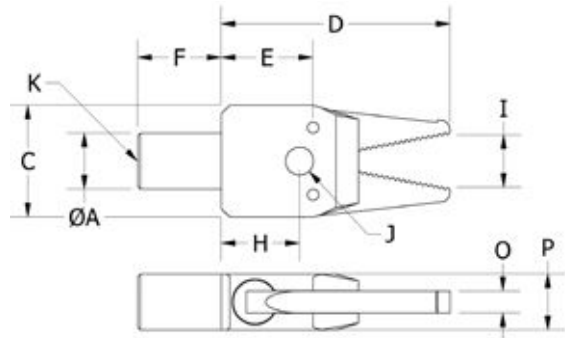
The Standard-Type jaws come with a knurled pattern on the jaw-face to better grip the sprue / part.

C-Type

The C-Type jaws have sensors added to them to detect when the jaws are in the closed state with a sprue / part clamped within them.

GRZ 10-8 PART/SPRUE GRIPPER

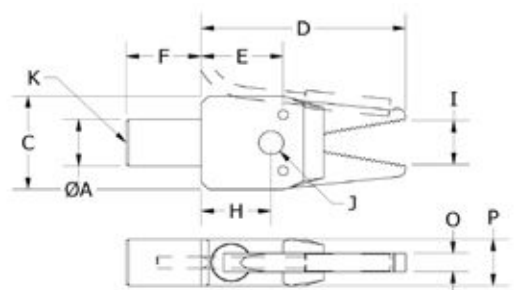
Product Code: GRZ 10-8



- Knurled pattern on the jaw-face with magnetic sensor to detect when jaw is closed.
- Single action spring return function.
- Fully compatible with Piab's modular EOAT/gripper system.
- Requires 10mm Mounting Clamp.

GRZ 10-8 C PART/SPRUE GRIPPER

Product Code: GRZ 10-8 C



- Knurled pattern on the jaw-face with magnetic sensor to detect when jaw is closed.
- Single action spring return function
- Fully compatible with Piab's modular EOAT/gripper system
- In-jaw part sensor does not require adjustment.
- Requires 10mm Mounting Clamp.

GRZ 10-10

This body size is able to apply 20 N force at midpoint of the jaw.

Requirements

- Maximum air pressure 87 psi (6 bar).
- Requires filtered dry air.

Jaw Types Available:



Standard-Type

The Standard-Type jaws come with a knurled pattern on the jaw-face to better grip the sprue / part.

A-Type

The A-Type jaws have 2 holes for mounting custom jaws to the body.

A1-Type

The A1-Type jaws have 3 holes for mounting custom jaws to the body.

C-Type

The C-Type jaws have sensors added to them to detect when the jaws are in the closed state with a sprue/part clamped within them.

KT-Type

The KT-Type jaws have an equatorial diameter to pick parts that are round.



NP-Type

The NP-Type jaws add nitrile rubber pad to the jaws to prevent marring of finished parts.

NPC-Type

The NPC-Type has long jaws with the full surface of saw teeth.

ST-Type

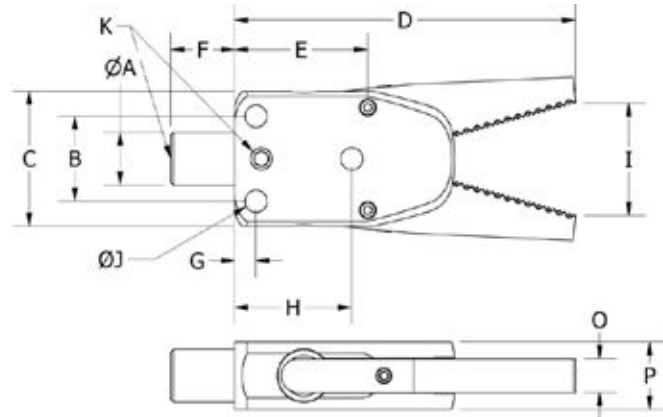
The ST-Type jaw adds aggressive teeth to clamp into the sprue.

STC-Type

The STC-Type jaw adds aggressive teeth to clamp into the sprue.

GRZ 10-10 PART/SPRUE GRIPPER

Product Code: GRZ 10-10

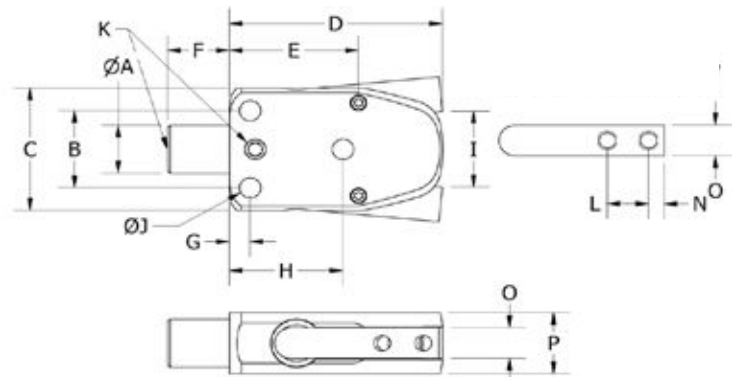


- The Standard-Type jaws come with a knurled pattern on the jaw-face to better grip the sprue/part.
- Single action spring return function.
- Fully compatible with Piab's modular EOAT/gripper system.
- Anodized finish.

	A	B	C	D	E	F	G	H	I	J	K	O	P	Force (N)	Piab No.
GRZ 10-10	10	16	25	64	25	12	4	22	21	4.2	M5	6	13	20	0213190

GRZ 10-10 A PART/SPRUE GRIPPER

Product Code: GRZ 10-10 A

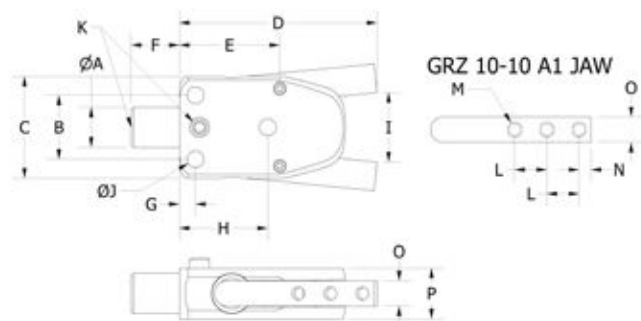


- 2 Holes in the jaws to allow mounting custom jaws.
- Single action spring return function.
- Fully compatible with Piab's modular EOAT/gripper system.
- Anodized Finish.
- Requires 10mm Mounting Clamp, or mounting holes.

	A	B	C	D	E	F	G	H	I	J	K	L	M	N	O	P	Piab No.
GRZ 10-10 A	10	16	25	41	25	12	4	22	17	4.2	M5	8	M4	3	6	13	0214354

GRZ 10-10 A1 PART/SPRUE GRIPPER

Product Code: GRZ 10-10 A1

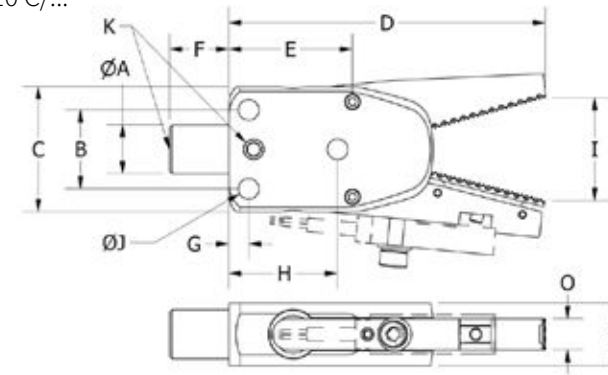


- 3 Holes in the jaws to allow mounting custom jaws.
- Single action spring return function.
- Fully compatible with Piab's modular EOAT/gripper system.
- Anodized Finish.
- Requires 10mm Mounting Clamp, or mounting holes.

	A	B	C	D	E	F	G	H	I	J	K	L	M	N	O	P	Piab No.
GRZ 10-10 A1	10	16	25	48	25	12	4	22	19	4.2	M5	8	M4	3	6	13	0214356

GRZ 10-10 C/... PART/SPRUE GRIPPER

Product Code: GRZ 10-10 C/...

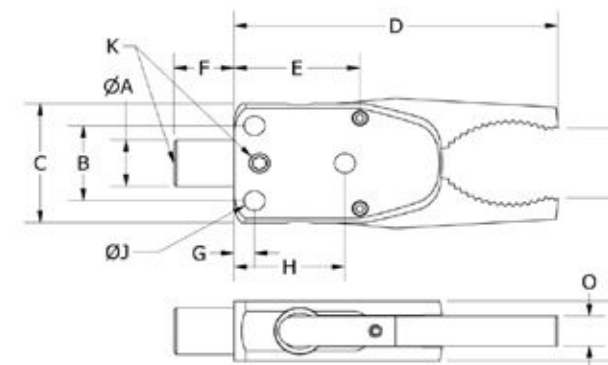


- The C-Type jaws have sensors added to them to detect when the jaws are in the closed state with a sprue/part clamped within them.
- Single action spring return function.
- Fully compatible with Piab's modular EOAT/gripper system.
- Anodized Finish.
- External sensor does not require adjustment.
- Requires 10mm Mounting Clamp, or mounting holes.

	A	B	C	D	E	F	G	H	I	J	K	O	P	Force (N)	Sensor (Inc.)	Piab No.
GRZ 10-10 C-N	10	16	25	64	25	12	4	22	21	4.2	M5	6	13	20	SN 1.5	0213358
GRZ 10-10 C-N8	10	16	25	64	25	12	4	22	21	4.2	M5	6	13	20	SN 1.5-P	0213396
GRZ 10-10 C-P	10	16	25	64	25	12	4	22	21	4.2	M5	6	13	20	SP 1.5	0213344
GRZ 10-10 C-P8	10	16	25	64	25	12	4	22	21	4.2	M5	6	13	20	SP 1.5-P	0213353

GRZ 10-10 KT PART/SPRUE GRIPPER

Product Code: GRZ 10-10 KT

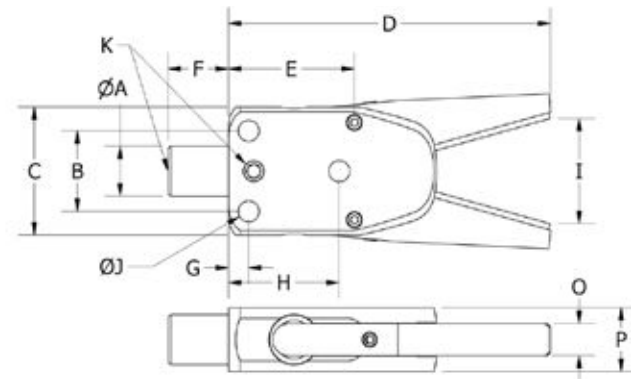


- The KT-Type jaws have an equatorial diameter to pick parts that are round.
- The T-Type jaws adds diagonal teeth to the jaw-face to prevent slipping of the material being grabbed.
- Single action spring return function.
- Fully compatible with Piab's modular EOAT/gripper system.
- Anodized Finish.
- Requires 10mm Mounting Clamp, or mounting holes.

	A	B	C	D	E	F	G	H	I	J	K	O	P	Force (N)	Piab No.
GRZ 10-10 KT	10	16	25	64	25	12	4	22	14	4.2	M5	6	13	20	0214360

GRZ 10-10 NP PART/SPRUE GRIPPER WITH PADDED JAW

Product Code: GRZ 10-10 NP

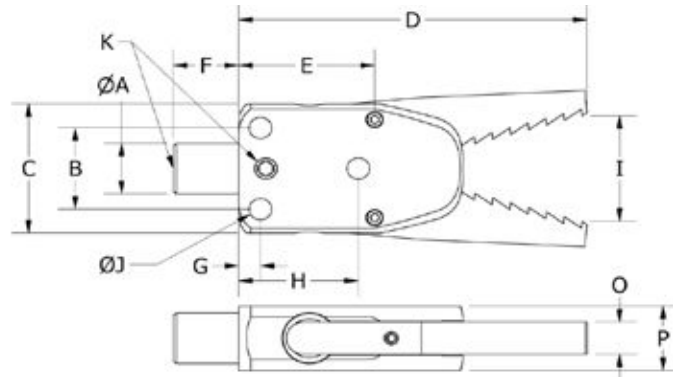


- The NP-Type jaws add nitrile rubber pad to the jaws to prevent marring of finished parts.
- Single action spring return function.
- Fully compatible with Piab's modular EOAT/gripper system.
- Anodized finish.

	A	B	C	D	E	F	G	H	I	J	K	O	P	Force (N)	Piab No.
GRZ 10-10 NP	10	16	25	64	25	12	4	22	21	4.2	M5	6	13	20	0213190

GRZ 10-10 ST PART/SPRUE GRIPPER

Product Code: GRZ 10-10 ST

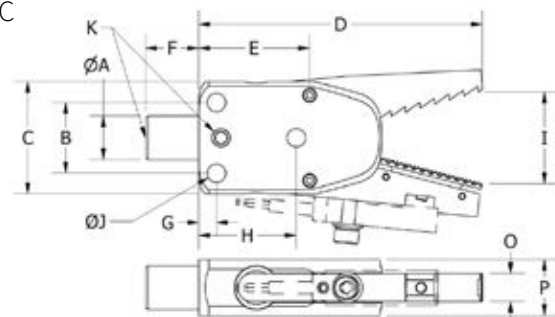


- Aggressive teeth to clamp into the sprue.
- Single action spring return function.
- Fully compatible with Piab's modular EOAT/gripper system.
- Anodized finish.

	A	B	C	D	E	F	G	H	I	J	K	O	P	Force (N)	Piab No.
GRZ 10-10 ST	10	16	25	64	25	12	4	22	21	4.2	M7	6	13	20	0213196

GRZ 10-10 STC PART/SPRUE GRIPPER

Product Code: GRZ 10-10 STC



- Used for aggressive teeth to clamp into the sprue.
- Single action spring return function.
- Fully compatible with Piab's modular EOAT/gripper system.
- Anodized Finish.
- External sensor does not require adjustment.

	A	B	C	D	E	F	G	H	I	J	K	O	P	Force (N)	Sensor (Inc.)	Piab No.
GRZ 10-10 STC-N	10	16	25	64	25	12	4	22	21	4.2	M8	6	13	20	SN 1.5	0213478
GRZ 10-10 STC-N8	10	16	25	64	25	12	4	22	21	4.2	M8	6	13	20	SN 1.5-P	0213741
GRZ 10-10 STC-P	10	16	25	64	25	12	4	22	21	4.2	M8	6	13	20	SP 1.5	0213468
GRZ 10-10 STC-P8	10	16	25	64	25	12	4	22	21	4.2	M8	6	13	20	SP 1.5-P	0213469

GRZ 10-12

This body size is able to apply 34 N force at midpoint of the jaw.

Requirements

- Maximum air pressure 87 psi (6 bar).
- Requires filtered dry air.

Jaw Types Available:



Standard-Type

The Standard-Type jaws come with a knurled pattern on the jaw-face to better grip the sprue/part.



A-Type

The A-Type jaws have 2 holes for mounting custom jaws to the body.



C-Type

The C-Type jaws have sensors added to them to detect when the jaws are in the closed state with a sprue/part clamped within them.



NP-Type

The NP-Type jaws add nitrile rubber pad to the jaws to prevent marring of finished parts.



NPC-Type

The NPC-Type has long jaws with the full surface of saw teeth.



ST-Type

The ST-Type jaw adds aggressive teeth to clamp into the sprue.

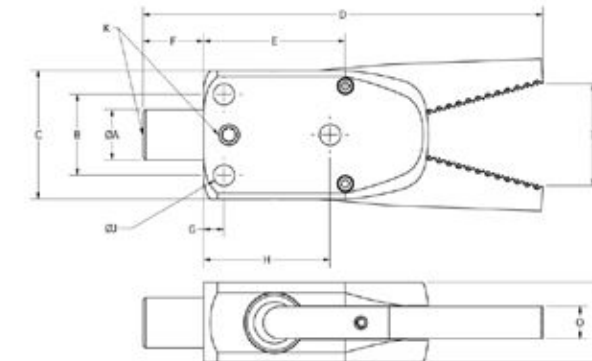


STC-Type

The STC-Type jaw adds aggressive teeth to clamp into the sprue.

GRZ 10-12 PART/SPRUE GRIPPER

Product Code: GRZ 10-12

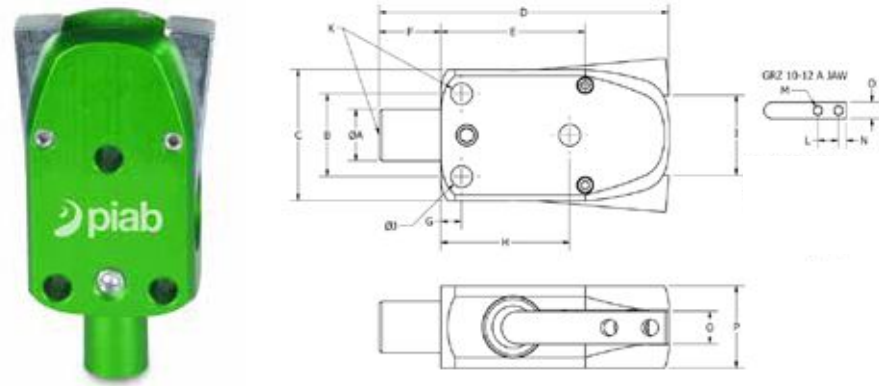


- The Standard-Type jaws come with a knurled pattern on the jaw-face to better grip the sprue/part.
- Single action spring return function.
- Fully compatible with Piab's modular EOAT/gripper system.
- Anodized finish.

	A	B	C	D	E	F	G	H	I	J	K	O	P	Force (N)	Piab No.
GRZ 10-12	10	16	25	67	28	12	4	25	21	4.2	M5	6	16	34	0213191

GRZ 10-12 A PART/SPRUE GRIPPER

Product Code: GRZ 10-12 A

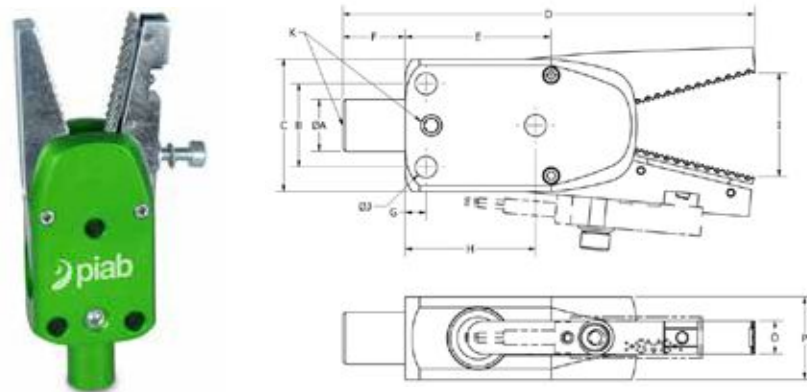


- 2 Holes in the jaws to allow mounting custom jaws .
- Single action spring return function.
- Fully compatible with Piab's modular EOAT/gripper system.
- Anodized finish.

	A	B	C	D	E	F	G	H	I	J	K	L	M	N	O	P	Piab No.
GRZ 10-12 A	10	16	25	44	28	12	4	25	17	4.2	M5	8	M4	3	6	16	0214363

GRZ 10-12 C/... PART/SPRUE GRIPPER

Product Code: GRZ 10-12 C/...

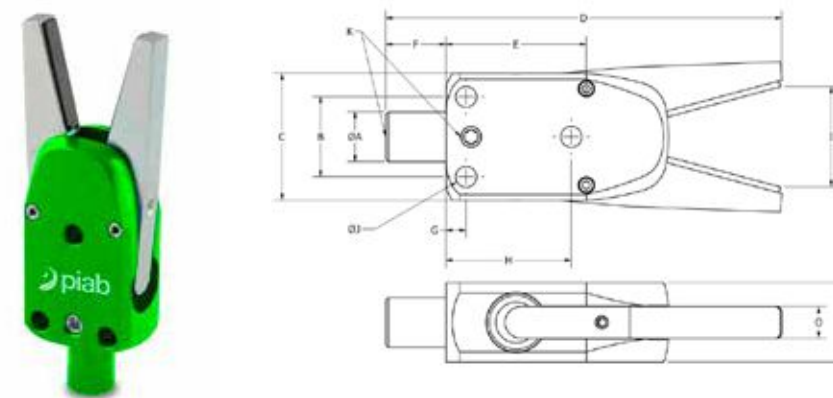


- The C-Type jaws have sensors added to them to detect when the jaws are in the closed state with a sprue/part clamped within them.
- Single action spring return function.
- Fully compatible with Piab's modular EOAT/gripper system.
- Anodized Finish.
- External sensor does not require adjustment.

	A	B	C	D	E	F	G	H	I	J	K	O	P	Force (N)	Sensor (Inc.)	Piab No.
GRZ 10-12 C-N	10	16	25	67	28	12	4	25	21	4.2	M5	6	16	34	SN 1.5	0213399
GRZ 10-12 C-N8	10	16	25	67	28	12	4	25	21	4.2	M5	6	16	34	SN 1.5-P	0213418
GRZ 10-12 C-P	10	16	25	67	28	12	4	25	21	4.2	M5	6	16	34	SP 1.5	0213397
GRZ 10-12 C-P8	10	16	25	67	28	12	4	25	21	4.2	M5	6	16	34	SP 1.5-P	0213398

GRZ 10-12 NP PART/SPRUE GRIPPER WITH PADDED JAW

Product Code: GRZ 10-12 NP

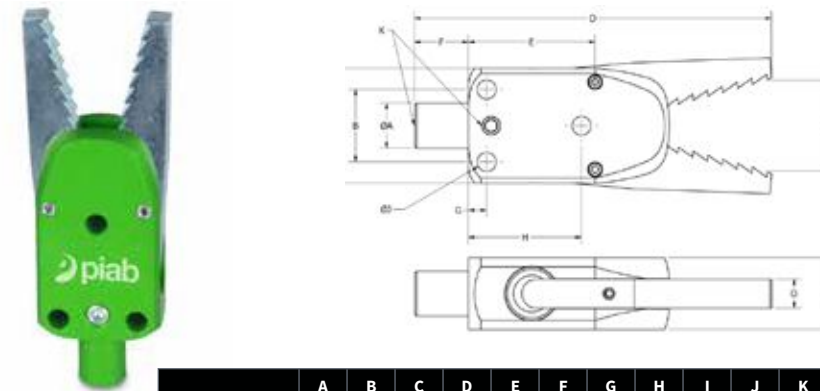


- The NP-Type jaws add nitrile rubber pad to the jaws to prevent marring of finished parts.
- Single action spring return function.
- Fully compatible with Piab's modular EOAT/gripper system.
- Anodized finish.

	A	B	C	D	E	F	G	H	I	J	K	O	P	Force (N)	Piab No.
GRZ 10-12 NP	10	16	25	79.3	28	12	4	25	20	4.2	M5	6	16	34	0213203

GRZ 10-12 ST PART/SPRUE GRIPPER

Product Code: GRZ 10-12 ST

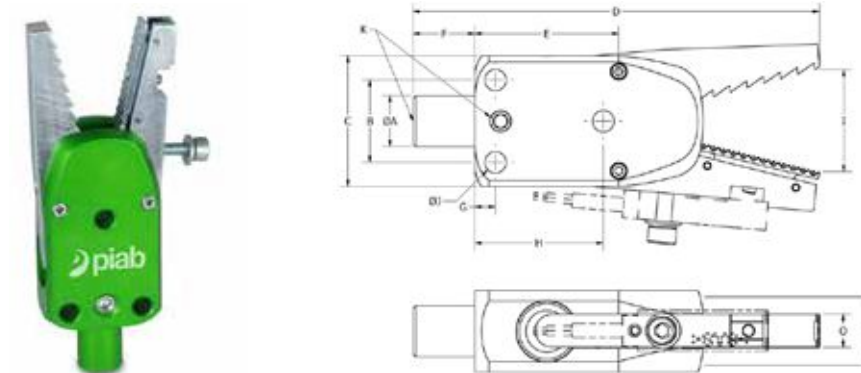


- The ST-Type jaw adds aggressive teeth to clamp into the sprue.
- Single action spring return function.
- Fully compatible with Piab's modular EOAT/gripper system.
- Anodized finish.

	A	B	C	D	E	F	G	H	I	J	K	O	P	Force (N)	Piab No.
GRZ 10-12 ST	10	16	25	67	28	12	4	25	21	4.2	M5	6	16	34	0213197

GRZ 10-12 STC/... PART/SPRUE GRIPPER

Product Code: GRZ 10-12 STC/...



- Aggressive teeth to clamp into the sprue.
- Single action spring return function.
- Fully compatible with Piab's modular EOAT/gripper system.
- Anodized Finish.
- External sensor does not require adjustment.

	A	B	C	D	E	F	G	H	I	J	K	O	P	Force (N)	Sensor (Inc.)	Piab No.
GRZ 10-12 STC-N	10	16	25	67	28	12	4	25	21	4.2	M5	6	16	34	SN 1.5	0213744
GRZ 10-12 STC-N8	10	16	25	67	28	12	4	25	21	4.2	M5	6	16	34	SN 1.5-P	0213745
GRZ 10-12 STC-P	10	16	25	67	28	12	4	25	21	4.2	M5	6	16	34	SP 1.5	0213742
GRZ 10-12 STC-P8	10	16	25	67	28	12	4	25	21	4.2	M5	6	16	34	SP 1.5-P	0213743