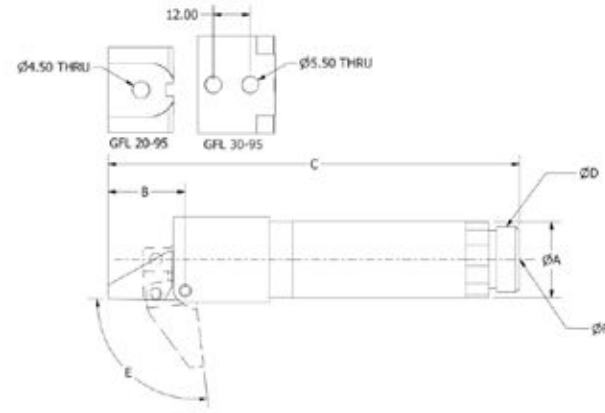


**GFL DOUBLE ACTING GRIPPER FINGER**



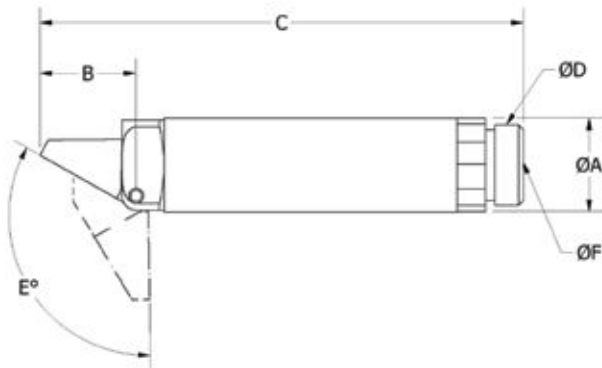
- Cam locking design remains locked in the event of pressure loss.
- Normally is protected and located with our ZTS and backed up with the ANF finger guide.
- Extendable for longer reach using VLR arm extensions.
- Fully compatible with Piab's modular EOAT gripper system.
- Has two M5 thru holes on gripper finger head, 12mm apart.

**Requirements**

- Maximum air pressure 87 psi (6 bar).
- Requires filtered dry air.

	A	B	C	D	E (Degrees)	F	Force (N)	Weight (g)	Piab No.
<b>GFL 20-95</b>	20	20	107	M17x1	95	G 1/8"	110	83	0214317
<b>GFL 30-95</b>	30	33	147	M17x1	95	G 1/8"	160	245	0214318

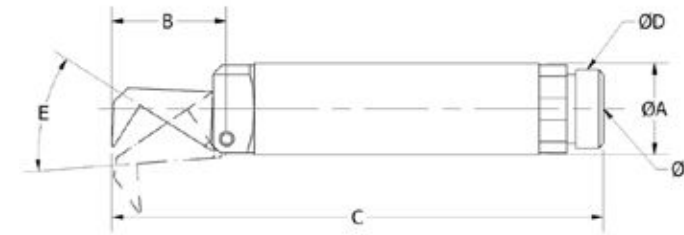
**GRF GRIPPER FINGERS**



- Normally is protected and located with our ZTS and backed-up with the ANF.
- Finger guide.
- Pneumatically single acting, spring return function.
- Extendable for longer reach using VLR Arm Extensions.
- Fully compatible with modularEOAT gripper system.

	A	B	C	D	E (Degrees)	F	Weight (g)	Piab No.
<b>GRF 14-120</b>	55	71	3.27	M12x1	120	M5"	88	0213164
<b>GRF 20-120</b>	79	79	4.06	M17x1	120	G 1/8"	2.12	0213165
<b>GRF 30-120</b>	1.18	1.22	5.91	M27x1	120	G 1/8"	6.88	0213166

**GRF GRIPPER FINGER (SPRING RETURN)**



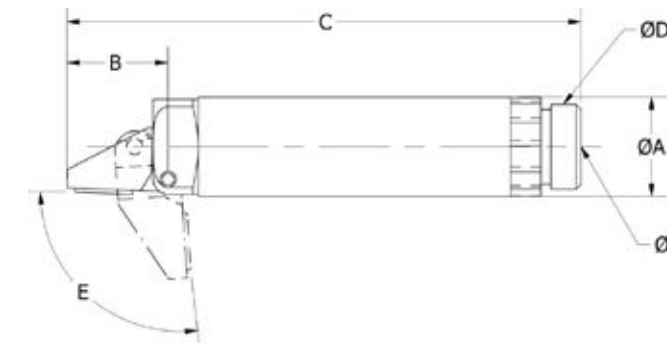
- Finger claw that securely flips & reaches around the part.
- Especially designed for difficult part-removal applications.
- Pneumatically single acting, spring return function.
- Extendable for longer reach using VLR Arm Extensions.
- Fully compatible with Piab's modular EOAT gripper system.

**Requirements**

- Maximum air pressure 87 psi (6 bar).
- Requires filtered dry air.

	A	B	C	D	E (Degrees)	F	Force (N)	Weight (g)	Piab No.
<b>GRF 14-35</b>	14	18.5	84	M12 x 1	35	G 1/8"	25	30	0213158
<b>GRF 20-35</b>	20	23	105	M17 x 1	35	G 1/8"	55	102	0213159
<b>GRF 30-35</b>	30	34	142	M27 x 1	35	G 1/8"	190	207	0213155

**GRF WITH VITON RUBBER PADDED GRIPPER FINGER**



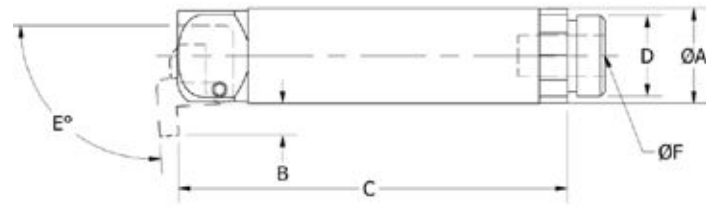
- GRF gripper finger with Viton rubber pad.
- Prevents marring of finished parts.
- Pneumatically single acting, spring return function.
- Extendable for longer reach using VLR Arm Extensions.
- Fully compatible with Piab's modular EOAT gripper system.

**Requirements**

- Maximum air pressure 87 psi (6 bar).
- Requires filtered dry air.

	A	B	C	D	E (Degrees)	F	Force (N)	Weight (g)	Piab No.
<b>GRF 14-95 VP</b>	14	19	77	M12 x 1	95	M5	16	30	0213151
<b>GRF 20-95 VP</b>	20	20	95	M17 x 1	95	G 1/8"	42	60	0213154
<b>GRF 30-95 VP</b>	30	29	137	M27 x 1	95	G 1/8"	120	200	0213157

**GRF GRIPPER FINGER (SPRING RETURN)**



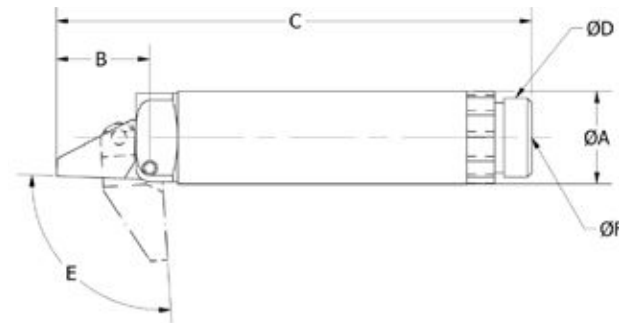
- Specially designed to flip and secure thin edges.
- Normally is backed-up with our ANS finger guide.
- Pneumatically single acting, spring return function.
- Extendable for longer reach using VLR Arm Extensions.
- Fully compatible with Piab's modular EOAT gripper system.

**Requirements**

- Maximum air pressure 87 psi (6 bar).
- Requires filtered dry air.

	A	B	C	D	E (Degrees)	F	Force (N)	Weight (g)	Piab No.
<b>GRF 14-90</b>	14	5	72	M12x1	90	M5	20	28	0213161
<b>GRF 20-90</b>	20	7	83	M17 x 1	90	G 1/8"	95	58	0213162
<b>GRF 30-90</b>	30	11	124	M27 x 1	90	G 1/8"	220	205	0213163

**GRF GRIPPER FINGER (SPRING RETURN)**



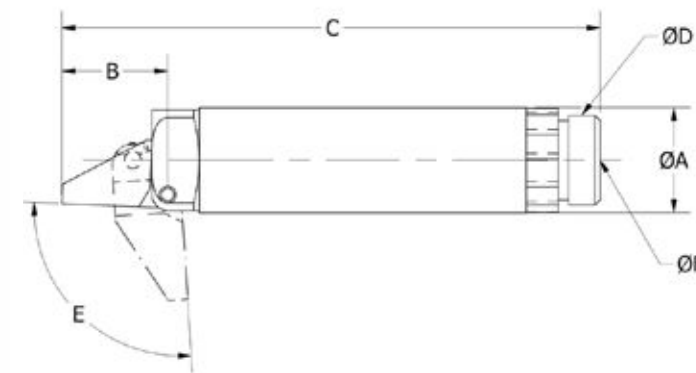
- Our popular gripper finger solution to secure difficult parts.
- Normally is protected and located with our ZTS and backed-up with the ANF finger guide.
- Pneumatically single acting, spring return function.
- Extendable for longer reach using VLR Arm Extensions.
- Fully compatible with Piab's modular EOAT gripper system.

**Requirements**

- Maximum air pressure 87 psi (6 bar).
- Requires filtered dry air.

	A	B	C	D	E (Degrees)	F	Force (N)	Weight (g)	Sensor Kit	Piab No.
<b>GRF 14-95 C</b>	14	19	77	M12 x 1	95	M5	16	30	GRF 14 SR	0213150
<b>GRF 20-95 C</b>	20	20	95	M17 x 1	95	G 1/8"	42	61	GRF 20 SR	0213153
<b>GRF 30-95 C</b>	30	29	137	M27 x 1	95	G 1/8"	120	204	GRF 30 SR	0213156

**GRF GRIPPER FINGER (SPRING RETURN)**



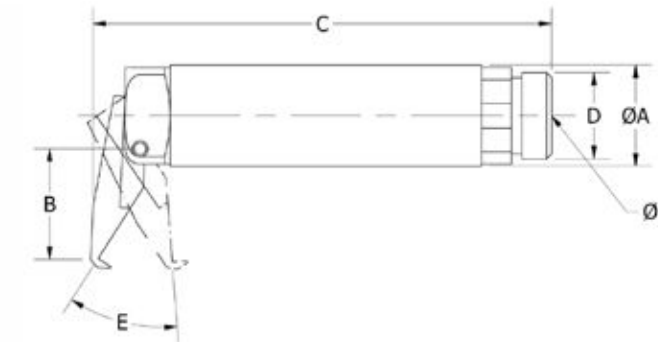
- Our popular gripper finger solution to secure difficult parts.
- Normally is protected and located with our ZTS and backed-up with the ANF finger guide.
- Pneumatically single acting, spring return function.
- Extendable for longer reach using VLR Arm Extensions.
- Fully compatible with Piab's modular EOAT gripper system.

**Requirements**

- Maximum air pressure 87 psi (6 bar).
- Requires filtered dry air.

	A	B	C	D	E (Degrees)	F	Force (N)	Weight (g)	Sensors	Piab No.
<b>GRF 14-95</b>	14	19	77	M12 x 1	95	M5	16	30	No	0213149
<b>GRF 20-95</b>	20	20	95	M17 x 1	95	G 1/8"	42	61	No	0213152
<b>GRF 30-95</b>	30	29	137	M27 x 1	95	G 1/8"	120	204	No	0213155

**GRW GRIPPER FINGER (SPRING RETURN)**



- Finger claw that flips and grips securely around the part.
- Especially designed for difficult part-removal applications.
- Pneumatically single acting, spring return function.
- Extendable for longer reach using VLR Arm Extensions.
- Fully compatible with Piab's modular EOAT gripper system.

**Requirements**

- Maximum air pressure 87 psi (6 bar).
- Requires filtered dry air.

	A	B	C	D	E (Degrees)	F	Force (N)	Weight (g)	Sensors	Piab No.
<b>GRW 20-35</b>	20	20	85	M17 x 1	35	G 1/8"	50	62	-	0214352
<b>GRW 30-35</b>	30	34	123	M27 x 1	35	G 1/8"	160	203	Yes	0214353

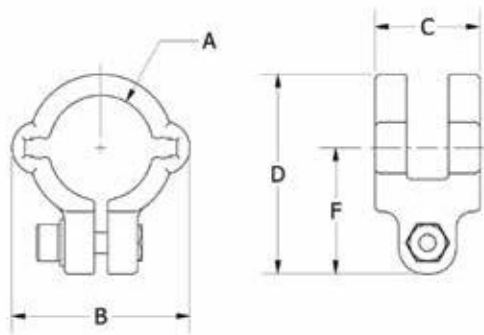
ARM EXTENSIONS



- Extends GRF and GRW gripper fingers.
- Attaches to ADZ and ADG cylinder adapters and to ZTB locators.
- Tightening hole for securing connection to mating parts.

	A	B	C	Weight (g)	Piab No.
<b>VLR 10-90</b>	10	M8 x 1	90	9	0213182
<b>VLR 14-120</b>	14	M12 x 1	120	19	0213183
<b>VLR 20-150</b>	20	M17 x 1	150	46	0213184
<b>VLR 30-200</b>	30	M27 x 1	200	94	0213185

GRF SENSOR MOUNTS

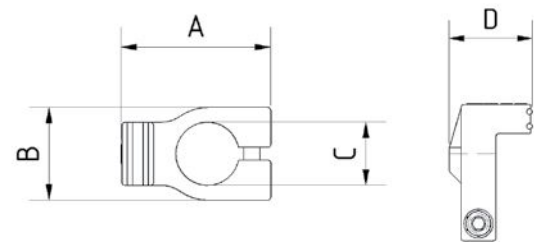


- Allows mounting of 1 or 2 sensors to sensor capable GRF's.
  - The sensors can sense open or closed position of the fingers.
  - Typically used with VLR extension arms.
- \*Optional sensor: RRK-93, RRK-93-TP, RRK-M9P, or RRK-M9P-TP.



	A	B	C	D	F	Piab No.
<b>GRF 14 SR</b>	14	28	18	29	18	0213167
<b>GRF 20 SR</b>	20	34	20	38	24	0213168
<b>GRF 30 SR</b>	30	44	26	51	32	0213169

FIXING DEVICES FOR GRIPPING FINGERS

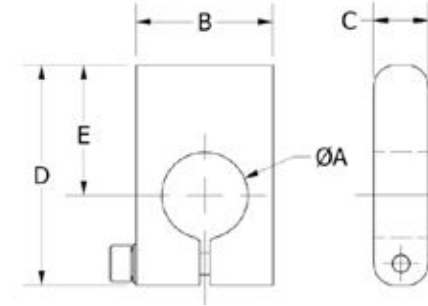


- Fixing devices for gripping fingers with a rubberized layer.
- Rubberized and silicone-free layer.



	A	B	C	D	Piab No.
<b>GZK20 - 50 - 50</b>	40.5	24	14	22.5	0213339
<b>GZK20 - 60 - 60</b>	47.3	30	20	28.5	0213340

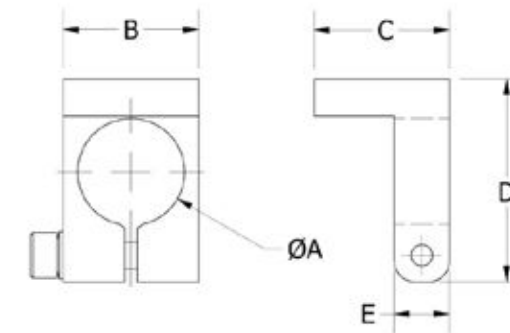
ANF DELRIN FINGER ACCESSORY



- Used as a finger backup and locator.
- Made of Delrin to protect part.

	A	B	C	D	E	Gripper Finger	Weight (g)	Piab No.
<b>ANF 14</b>	14	22	10	42	25	GRF 14-95 / GRF 14-95 VP	13	0213173
<b>ANF 20</b>	20	32	13	51	30	GRF 20-95 / GRF 20-95 VP / GRW 20-35	26	0213174
<b>ANF 30</b>	30	38	19	66	42	GRF 30-95 / GRF 30-95 VP / GRW 30-35	52	0213175
<b>ANF 14 P</b>	30	38	19	66	42	GRF 14-95 / GRF 14-95 VP	52	0213176
<b>ANF 20 P</b>	30	38	19	66	42	GRF 20-95 / GRF 20-95 VP / GRW 20-3	52	0213177
<b>ANF 30 P</b>	30	38	19	66	42	GRF 30-95 / GRF 30-95 VP / GRW 30-35	52	0213178

ANS DELRIN FINGER ACCESSORY



- Used with GRF...-90 to back up the finger for a firm mechanical grip.
- Made of Delrin to protect part.



	A	B	C	D	E	Gripper Finger	Weight (g)	Piab No.
<b>ANS 14</b>	14	19	23	31	10	GRF 14-90	10	0213179
<b>ANS 20</b>	20	25	25	38	10	GRF 20-90	17	0215263
<b>ANS 30</b>	30	38	38	57	11	GRF 30-90	30	0213181